

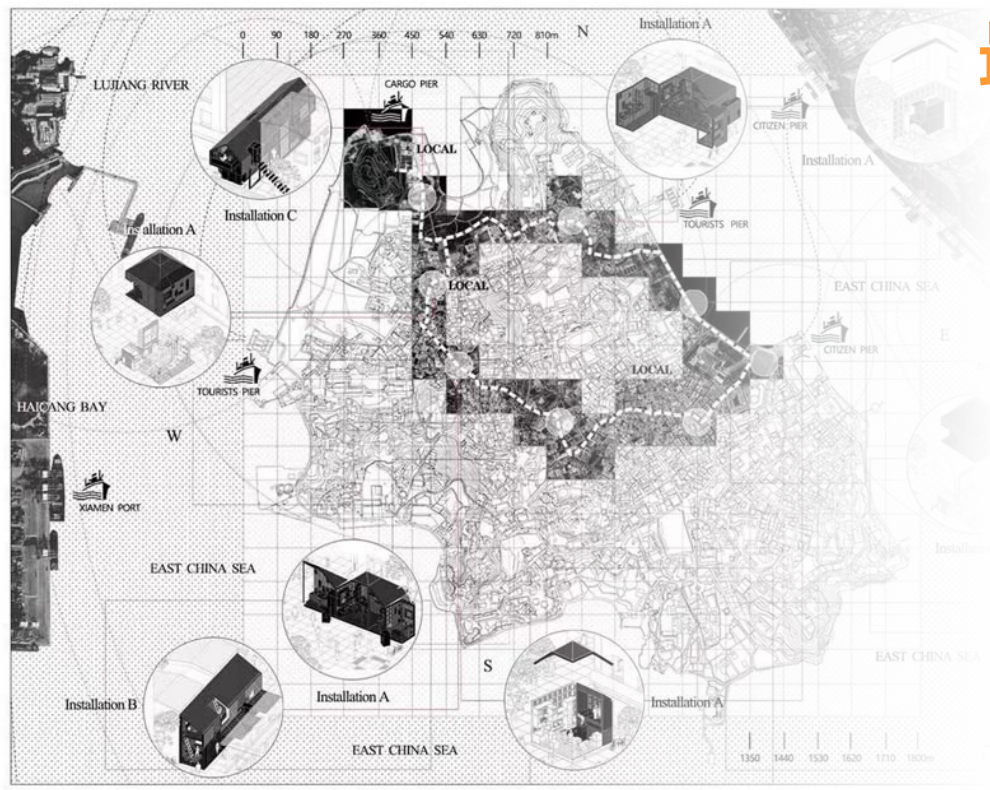
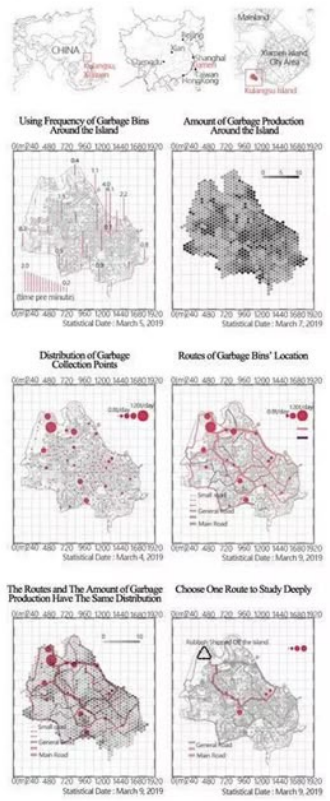


保证项目**逻辑的完整性**，
将每一个项目**当作一个故事**来讲，

场地，主题，功能，概念，
设计过程，设计成果表达。

Plan for Kulangsu : Compact Modular Installations for Separate Waste Collection

Kulangsu, a small island off the shore of Xiamen, Fujian province, China, was added to the UNESCO World Cultural Heritage list as an early witness to globalization. Covering a mere 1.88 square kilometers, the island hosted settlements from 13 countries from the end of the First Opium War (1840-42) to the early 20th century. This designing is based on the current status of garbage collection in Kulangsu Island. They are designed to change the reality of the tedious and poor sanitation of garbage collection facilities on Kulangsu Island and the inability to promote interaction among citizens. The theme of the designing is to accurately shape the garbage collection device and the surrounding public space, so as to increase the basic functional requirements of garbage collection and to increase the recreational and interactive facilities based on the human behavior and basic needs into the daily life. In order to form a vivid scene of living situation around the device. The designing uses the method of architectural space guidance to promote the classification and recycling of garbage. In addition, the designing takes the actual construction details into account, including structural systems, building materials, construction methods, and etc., and it is a complete "construction practice class".



最终图纸表达

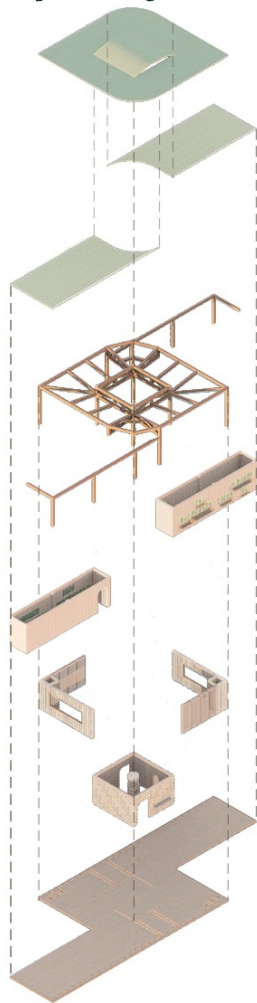
信息表达的清晰性

信息表达的有效性

信息表达的准确性

图面表达的美观性

Exploded Diagram



Roof

The roof of the central activity area is semi-circularly raised in the longitudinal direction, while the roofs of the side corridors and the interior spaces are divided into arcs. This design enables better air circulation and creates a more suitable living environment for birds.

Wooden Frame Structure

Make the entire building more stable.

Independent Interior Space Wall

It provides birdwatchers with a fully enclosed indoor space that can adapt to various weather conditions. And platforms for birds to briefly rest are set up on the exterior walls. The birdwatchers inside can see various species of birds through the wooden lattice windows (to prevent birds from colliding with reflective materials).

Half-enclosed Space Wall

The semi-enclosed movable wooden wall not only offers a relatively secluded observation perspective for birdwatchers, but also can be fully opened during the off-season of birdwatching to provide better living space for local birds.

Floor

Above, the sliding tracks provide the possibility for the semi-enclosed wooden walls to move.

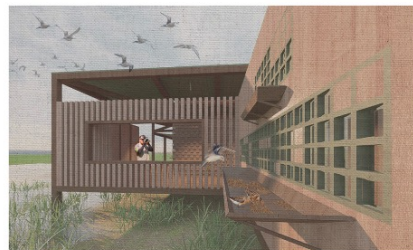
Rendering & Plan



01 Main Birdwatching Area



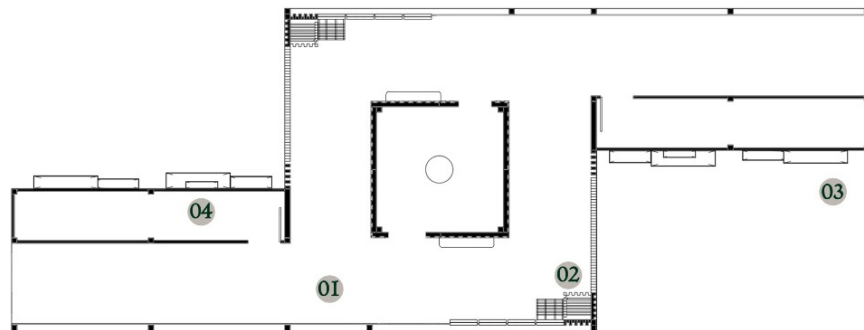
02 Corridor Area



03 Semi-open Birdwatching Area



04 Indoor Birdwatching Area



The dots represent the observation points where the effect diagram was taken.



整体逻辑

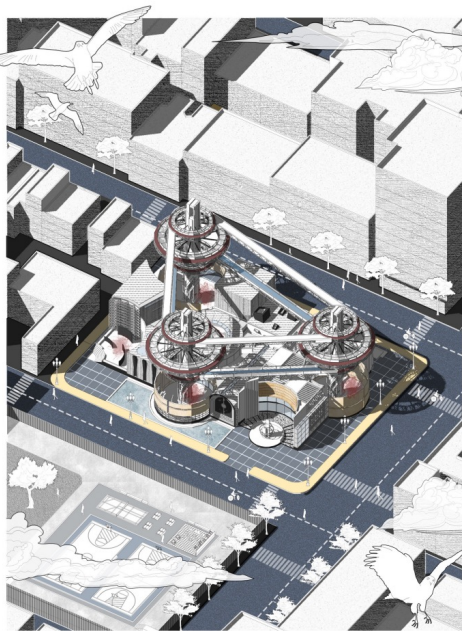
作品集集中的项目逻辑要完整，将每一个项目当作一个故事来讲，介绍故事的起因、经过、结果。

起因——发现问题（项目的背景，eg:场地调研，用户分析）

经过——分析问题（方案的生成，eg:体块生成，空间转译）

结果——解决问题（图纸的表达，eg:方案表达，效果图展示）

作品集整体逻辑：故事性



02 Mood Print Factory

Location: Manhattan, New York, USA
Area: 3200m²

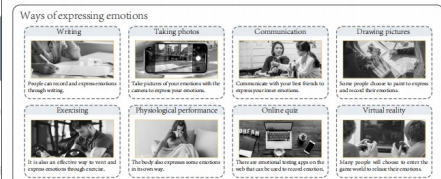
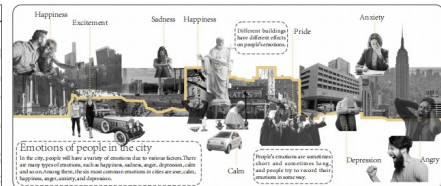
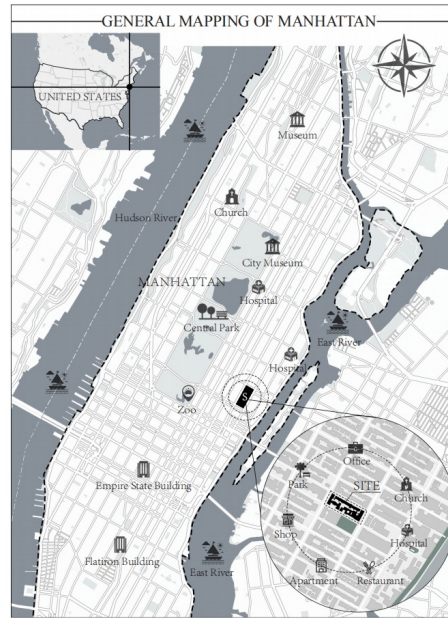
Academic project
Time: 2021.6-2021.8
Individual work

Surveying, previous research, concept, design and all
the drawings individually

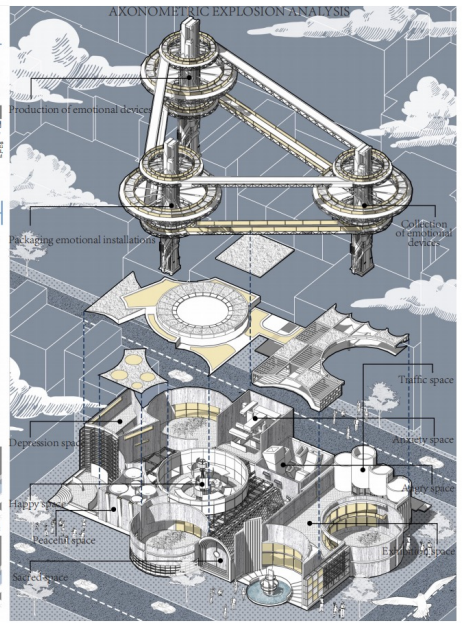
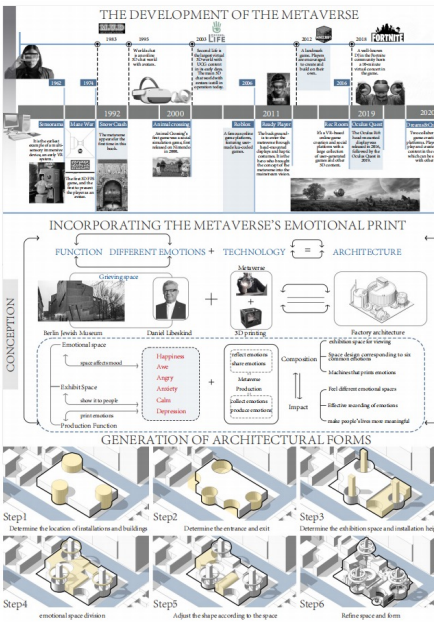
In life, people often have different emotions due to various factors, but the current way of recording emotions is relatively limited. People often cannot record their emotions intuitively. In this design, we first analyzed the six most common emotions in people's life by searching for information. Then I tried to print people's emotions intuitively by using the metaverse and 3D printing technology.

At the same time, in the process of design, six emotional spaces corresponding to emotions are created, and people can clearly feel the emotional feelings brought by the space when they are in it.

The site of this design is located near Central Park in Manhattan, USA. On the one hand, the United States has in-depth research on the metaverse, which is easily accepted by people. On the other hand, the supporting facilities here in Manhattan are very complete, and people's emotions are also more diverse.



作品集整体逻辑：故事性



EMOTIONAL SPACE EXPLORATION

	SPACE APPEARANCE	EMOTIONAL ELEMENT	USE OF LIGHT	SPATIAL FORM
AWES SPACE				
ANGRY SPACE				
HAPPY SPACE				
ANXIETY SPACE				
CALM SPACE				
DEPRESSED SPACE				

AWES SPACE

ANGRY SPACE

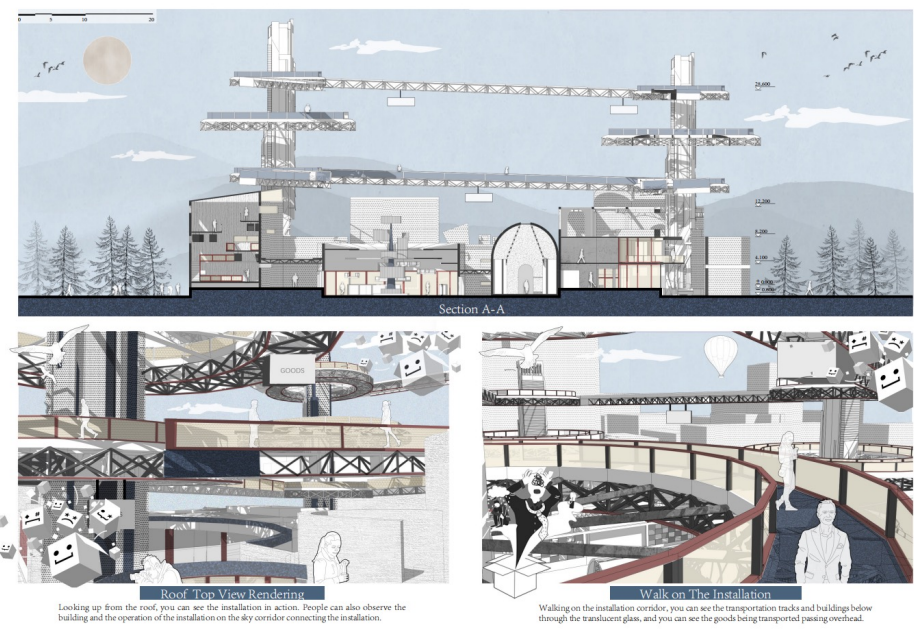
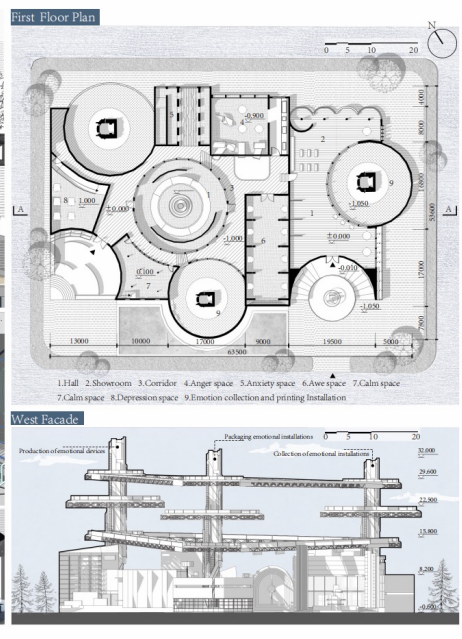
HAPPY SPACE

ANXIETY SPACE

CALM SPACE

DEPRESSED SPACE

作品集整体逻辑：故事性



作品集整体逻辑：故事性

02.MONOLOGUE OF TWO SOULS

Boiler room renovation & Emotional Experience Pavilion

"Love is like a magnet, opposites attract each other, it is easy to embrace. The poles have to overcome more resistance to embrace each other."

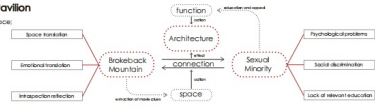
CUMT 2019 Spring Architectural Design

Instructor Sam Ma

Site: Xu Zhou ,China University Of Mining And

Technology

Project type: Individual Work



PROJECT OVERVIEW

Located on a university campus, the building was originally used as a boiler room for school heating until it was officially closed in 2002 due to environmental concerns. Until this year when the school began the renovation of the old building. First of all, starting from the lectures of renovation, I focus on the special group in school, whether in the past or now, about gay love don't understand, denigrate voice always there, combined with the film and book mountain, walked into two characters, the project lead us to rethink and call for law, do not have to be for or against the existence of sexual minorities. Because all people are equal individuals, and this requires each of us to know equal people in the face of discrimination.

The project is designed with three streams, two of which are translatable according to the experience of the male protagonists in the film, so that people can understand the situation of this group in the society, so as to respond and change the unfair treatment in the society. The cultural loop is the renovation flow line of the experience. There is also an educational block on this flow line, which will provide some tools to disseminate knowledge about sexual minorities, and also a psychological counseling center for those in need.



BROKEBACK MOUNTAIN

Taking the two protagonists in the film as clues, it translates the unknown psychological activities and experiences of special groups.

BACKGROUND ANALYSIS

Blind worship (Roman period : 800 BC - 146 BC)



In ancient Greece, homosexual behavior was tolerated and even advocated in society. At that time, homosexual behavior was not considered as a violation of the law, but a symbol of the sun of the pure love, outside moral constraints and a noble part of love.

Cruel persecution (the Dark Ages : 476-1453)



With the popularization and spread of Christianity in western countries, homosexuality has been persecuted. More and more people believe that homosexuality is a kind of shameful sexual behavior that punishes temporary carnal desires and escapes social responsibility, and it is a provocation to the traditional marriage value.

Safeguarding right (1951-2022)

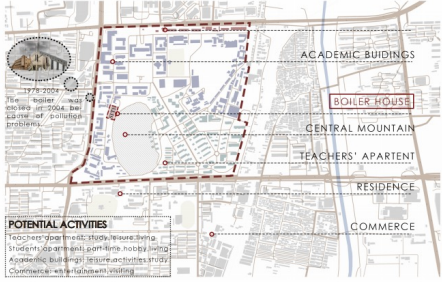


Rational respect (In The Future)



With the progress of the society, the deepening of the study on homosexuality and the popularization of human rights awareness, more and more people in the society begin to understand and respect the homosexual space.

LOCATION ANALYSIS



BEHAVIOR ANALYSIS



Ancient Greek Fresco
Sexual minorities depicted on early murals.



The Execution Scene
Sexual minorities who are being burned at the stake.



Calling For Equal Rights
Sexual minorities who are marching.

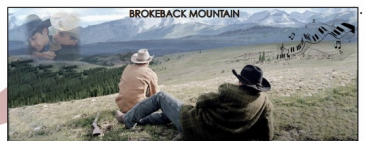


Peace And Love
In the future, all people will have equal rights.

作品集整体逻辑：故事性

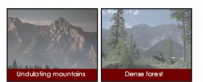
FILM BACKGROUND

Jack and Ennis met working as ranchers in western Wyoming on the bright summer day of 1963. In the lonely depths of Brokeback Mountain, two Thackericks fell in love. The last summer days of their lives were spent in someone's love. However, after the grazing, both of them returned to their original lives. The current duration and pressure of the society made them unable to be together in a far way. Both of them suffered physical violence, verbal violence and genital violence, and finally ended in tragedy.



SPACE TRANSLATION

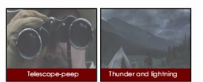
Back then... Jack & Ennis
The first scene, the climax of the film, tells the happy life of the two protagonists in Brokeback Mountain, which is contrasted to the scene of Brokeback Mountain, with dense forests, rolling mountains, a stream and a hairy tent can be seen outside the window.



Departure Jack
The fifth scene. Down the hill, Jack sees Brokeback Mountain behind him and the man he loves getting further and further away from him in the rearview mirror. A mirror is placed behind him to restore the scene.



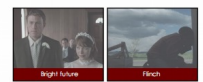
Chaos Jack & Ennis
The second scene, sudden changes in the weather tell of the plot. Lightning flashes and thunder, and a distant rancher peeks through binoculars into the eyes of the two characters. The periscope space to restore the scene.



Eclipse Jack
The sixth scene, Jack is stuck in endless waiting, enduring the long loneliness. The scene is set around, and you can only see a corner of Jack's eye and a symbol that symbolizes the passage of time.



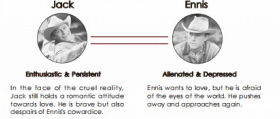
Struggle Ennis
The third scene, the two contrasting spaces symbolize the extremely complex psychology of Ennis. On one side is the road and on the other is the sky. He is self-denial and wavering.



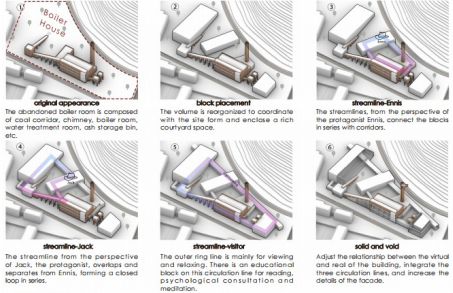
Watching Jack
The seventh scene, through the life scene of Jack, before his death through the words of his father. On the left side is the meditation space, he will look at the distant farm and look forward to the day when he brings Ennis back.



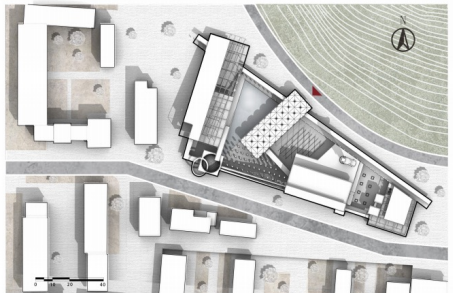
CHARACTER ANALYSIS



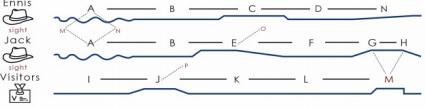
VOLUME DEVELOPMENT



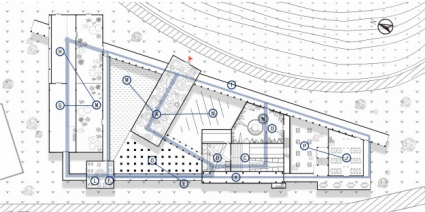
MASTER PLAN



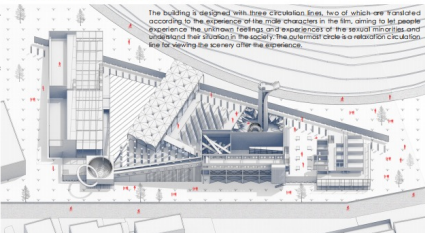
STREAMLINE ANALYSIS



GROUND FLOOR PLAN



AXONOMETRIC DRAWING



作品集整体逻辑：故事性

TOURING LINE ENNIS



Back then...// A

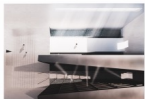
Rolling mountains, towering trees, rain light and bright music, Jack and Ennis are fond memories of bareback Mountains.

JACK



Chaos// B

The space is chaotic and hidden in the chaos are corners with fading lights, your every move is being monitored. Walk through the door on the left, and you'll be in the meeting room.



Struggle// C

The platform symbolizes equality for all, but there are two ways to choose, one is spacious and bright, the other is dark and grim, and the light in the dark space is stolen from the open space.



Stalemate// D

The sharpness of the outside contrasts with the softness of the inside, where a spiral staircase leads into the chimney.



Hope// N

Inside the chimney, there is an elevator to the top platform, and two holes are closed on either side of the chimney to bring in light and remove heat.



Departure// E

Down the road, looking out of the window are the wooden pillars of high-rise buildings, the closer to the mountains, the dimmer the light overhead.



Eclipse// F

In the arched space around, visitors can only look up and see a corner of the sky and the sun disk. Led display lights turn round and round, embracing the passage of time.



Watching// G

Watching the form, Jack looked up in meditation, waiting and missing For Ennis day after day.



Colonnade// I

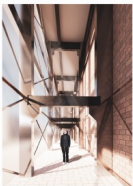
In order not to disrupt the atmosphere, the outside of the corridor is semi-closed, visitors need to lean over to the interior view, stimulate curiosity.

VISITORS



Education// J

In the education section, there will be some popular science books, so that visitors can have an in-depth understanding of the world.



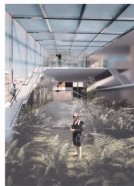
The original structure// K

The brick wall of the original facade was removed, leaving only the original structure space, to feel the vicissitudes of the old factory and the passage of time.



Leisure// L

The casual dining space does not cross the low line of the space volume, which flows to the lower volume.



Botanical garden// M

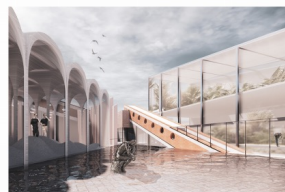
The form operated by Jack was restored and displayed in the form of a botanical garden for visitors to relax and enjoy.



Leisure garden// P



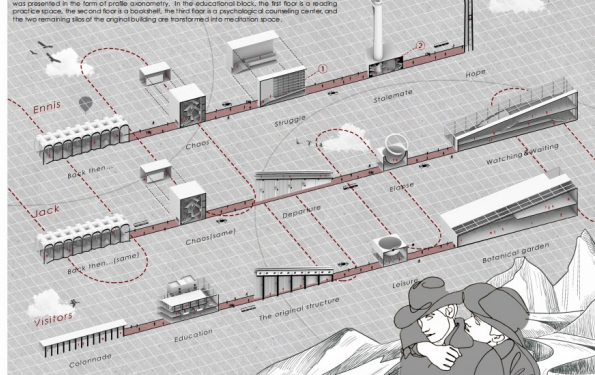
Hazy tent// N



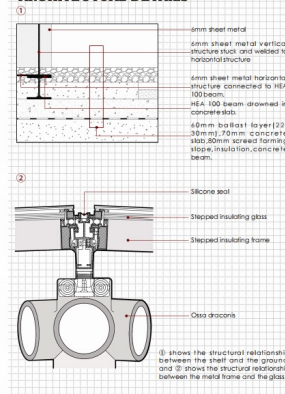
Waterscape// M

AXONOMETRIC SECTION DRAWING

The streamlines of Ennis and Jack overlapped and separated, and each scene on the streamlines was presented in the form of axonometric drawing. In the axonometric block, the top floor is a reading practice space, the second floor is a balcony, the third floor is a psychological counseling center, and the top remaining sites of the original building are transformed into meditation space.



ARCHITECTURAL DETAILS



作品集整体逻辑：故事性

03 Tsunami Arks

SUSTAINABLE INSTALLATION | SHELTER & RESCUE CENTER | PUBLIC SPACE

It was a vivid memory when we were walking on the beach on a family trip to Indonesia and suddenly a tsunami warning came up and everyone didn't know what to do. Luckily the tsunami wasn't too big where we were that day and didn't cause much damage, but the next day it was reported that many places around the area had severe damage to houses and transport and many people had lost their lives. I realised how small humans are in the face of tsunamis, and the idea of designing a reliable shelter for these areas, which are often hit by tsunamis, came to me.

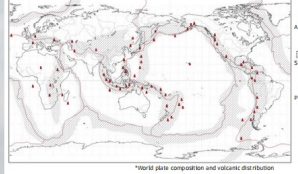
In recent years, as the world's environment has become more polluted and global warming has led to a gradual rise in sea levels, more and more natural disasters have occurred. Earthquakes, tsunamis and other tectonic disasters have plagued mankind and as fragile individuals, it is difficult for humans to save themselves from these huge natural disasters, with thousands of lives lost to sudden tsunamis in recent centuries.

This installation building exists to harness the energy generated by tsunamis and tidal waves, both large and small, to provide excellent conditions for the disposal and survival of post-tsunami debris, in order to reduce casualties among post-tsunami survivors, as well as to provide conditions for peacetime activities and research.

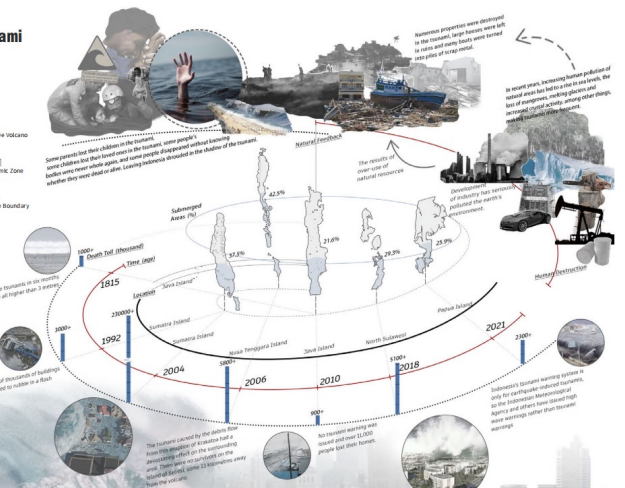
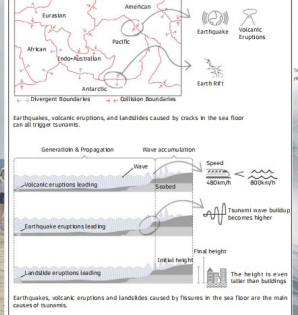


Indonesia The History of Past and Present about Tsunami

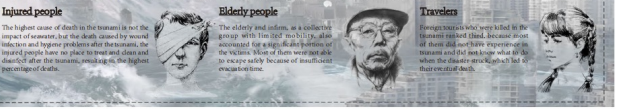
Tsunami has been a major natural disaster that humans have been unable to resist since ancient times, and it has been recorded that hundreds of species have been exterminated in tsunamis. Indonesia, as the tectonic of the world's three most active plates, the Pacific, Indian Ocean and Asian-European plates, has been under constant tsunami attack and nearly ten million people have died there, and the signs have been intensifying in recent centuries as the earth's environment has been slowly de-optimised, causing great distress in Indonesia.



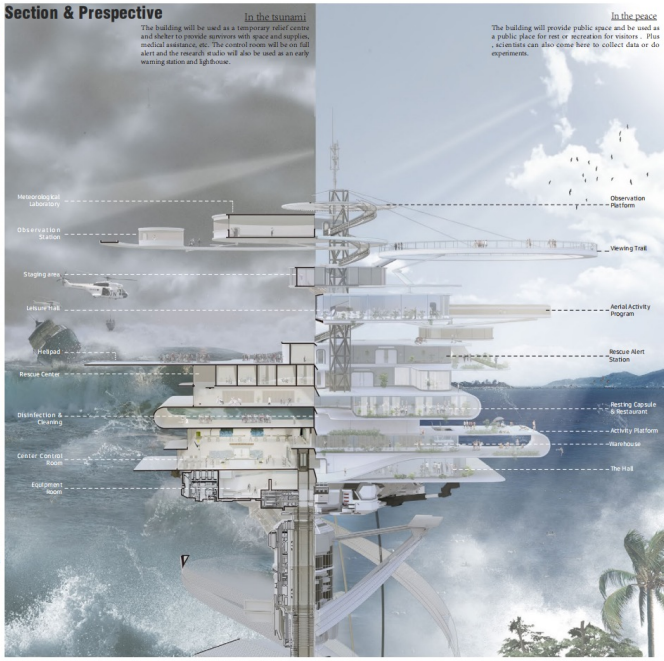
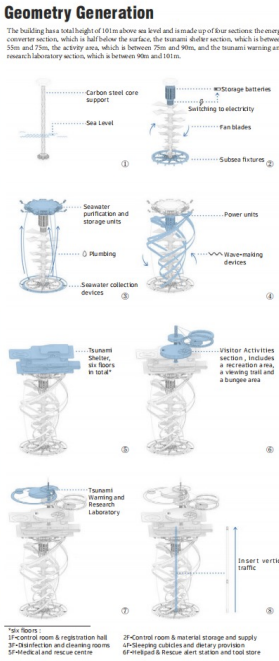
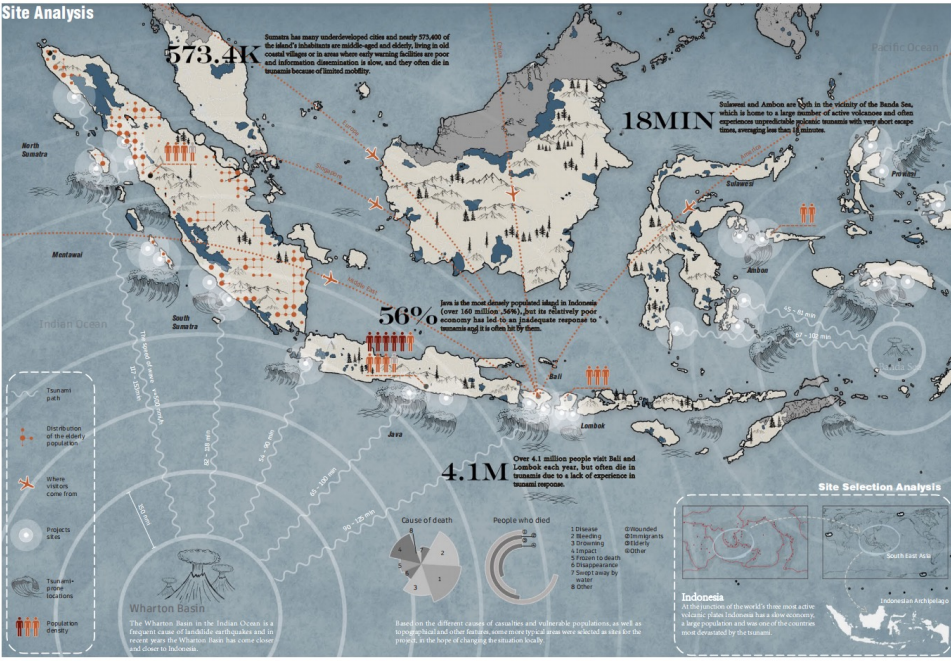
Tsunami Generation Theory



Injury-prone People Analysis

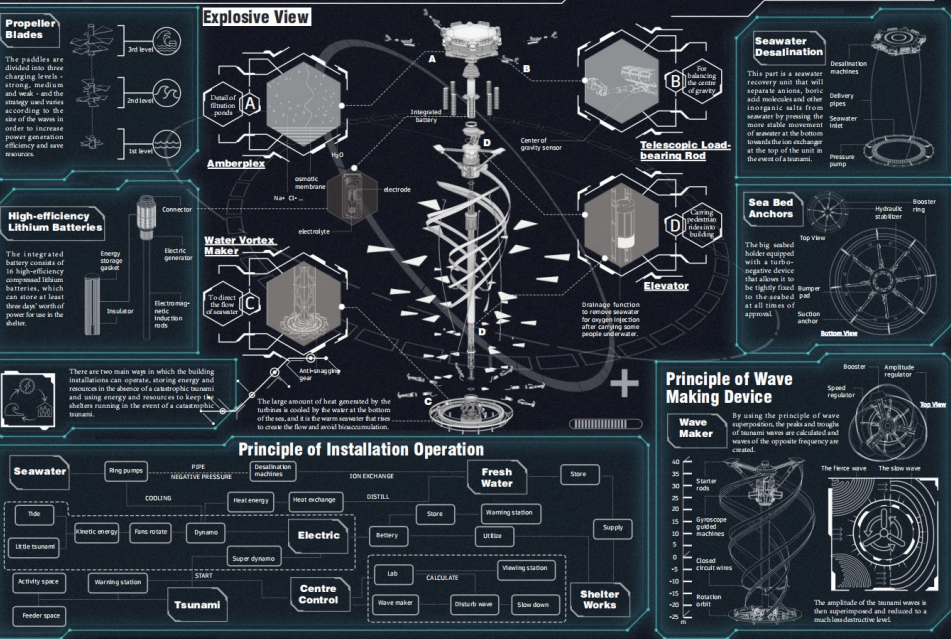


作品集整体逻辑：故事性



作品集整体逻辑：故事性

Analysis of the Working Principle of Sustainable Devices



Aerial View

The rendering shows how the whole building will respond when the tsunami hits, and how it will work when it is on alert and when the power plant is in operation.

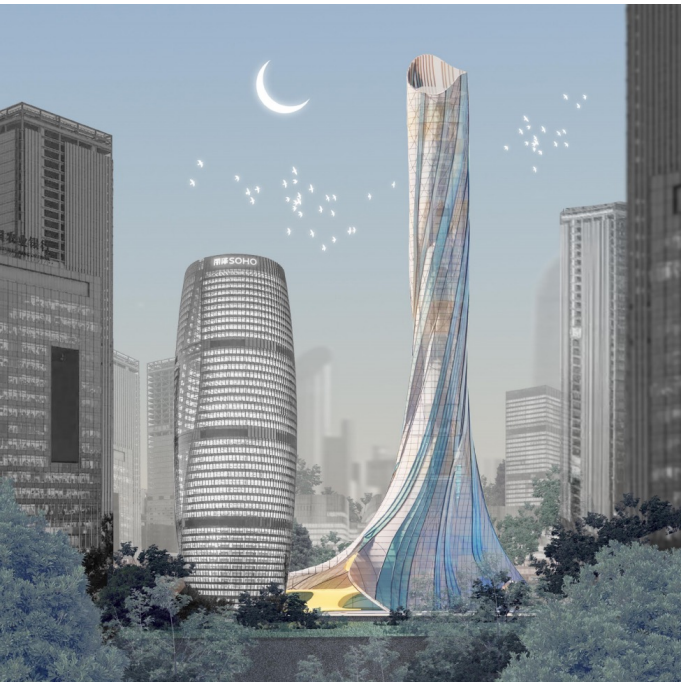


Rendering Scenes

The following four render scenes present the more distinctive functional blocks of the building at different times: ① Center control room, ② Air lounge hall, ③ Capsule sleep pods, ④ Aerial walkway.



作品集整体逻辑：故事性

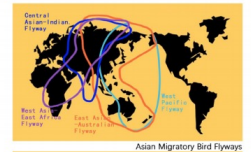


空游 TRANSPARENT SKY-LINE

AN BIOLOGICAL FRIENDLY MODEL

The expansion of the city has occupied the living space of birds, and the modern glass curtain wall has also become an important factor leading to bird collision, resulting in the dangerous sky for birds.

With the increasing threat of urban buildings to biology and the environment, the design hopes to reduce the negative impact of buildings on the environment and ecology by changing the traditional super high-rise construction pattern. Give the birds a safe sky, and give the creatures a harmonious environment.

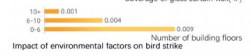
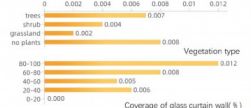


2019-2020 Record of bird hitting glass in China
Studies have shown that birds hitting buildings is considered to be the second leading cause of bird death caused by humans. Every year a large number of birds fly over China cities or villages, which also brings the risk of collision with buildings. With the advancement of urbanization, the expansion of human habitation and the popularity of glass curtain wall in architectural design, birds may face increasingly serious risk of impacting buildings.



DAYTIME: Vegetation, sky and other environments reflected by the reflective glass level think that the location on the glass can be reached. Birds can see the plants or space on the other side through the transparent glass, and think that they can reach the opposite side through the glass.
NIGHT: Artificial light will make the accidents lose their sense of direction and attract them.

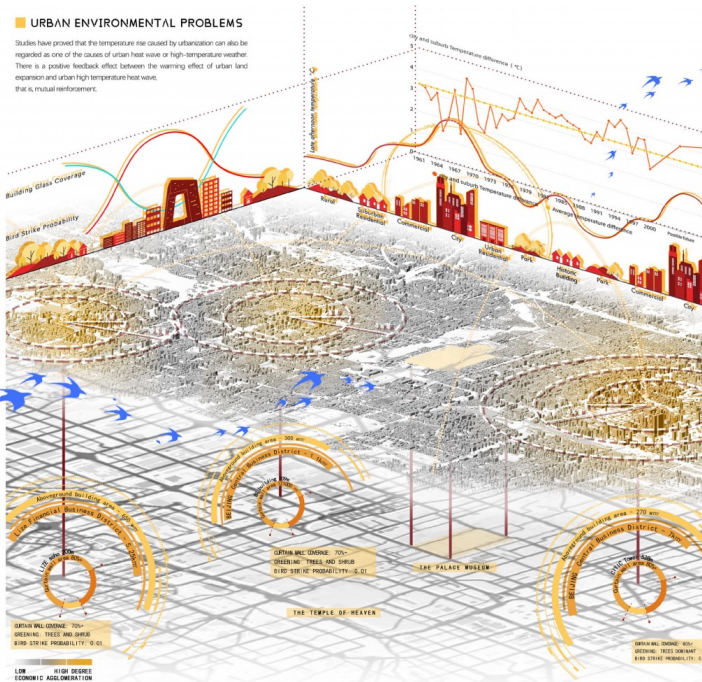
CONSEQUENCES: most accidents will die directly after hitting the building. The cause of death is usually entrapment/hemorrhage.



Impact of environmental factors on bird strike

URBAN ENVIRONMENTAL PROBLEMS

Studies have proved that the temperature rise caused by urbanization can also be regarded as one of the causes of urban heat wave or high-temperature weather. There is a positive feedback effect between the warming effect of urban land expansion and urban high temperature heat wave, that is, mutual reinforcement.



作品集整体逻辑：故事性

GENERATION

The transparent membrane structure and decorative lines are used to cover the inner glass curtain wall. Also, adding transparent, abstract reflective glass to the surface of glass allows birds see the existence of reflective substances, warning birds that they can't pass.

VOLUME GENERATION

① The intersection of multiple subways
② The center of Umei business district
③ Commanding height of the urban skyline

AXIS CONTINUATION

① The bottom of the building is southeast
② Extension of axis

SHAPE TWIST

① Shell opening
② The shape turns towards the green space

ENVIRONMENT MEASURES

① From top to bottom Rainwater collection
② From bottom to top Oxygen production
③ Air purification

DOUBLE SKIN

① Large glass curtain wall
② Add dark green frame structure and decorative lines
③ Cover the inner glass curtain wall

ULTRAVIOLET LIGHT

① Ultraviolet light sensor
② Reflectors
③ Ultraviolet reflection for humans
④ Birds can see the existence of reflective substances

STRUCTURE AND FACILITIES

Studies have proved that the temperature caused by urbanization can also be mitigated by one of the causes of urban heat island: water. Warning birds that they can't pass.

- Through height: Green area Without Elevator
- Standard layer
- Through height: Green area
- Through height: Green area
- Large space
- Rain Collector Module collection pool
- Rainwater filter
- Module water storage tank
- Landscape tree pool
- Gas distribution cylinder
- Gas filter purifier
- Intelligent gas management
- Oxygen production

CURTAIN WALL STRUCTURE

TRADITIONAL THERMAL CIRCULATION SYSTEM
The inner circulation double-layer glass curtain wall is fully enclosed, and the heat channel is connected with the exhaust pipe of the HVAC system in the indoor ceiling. Through the forced flow circulation, the energy consumption is high.

THERMAL CIRCULATION SYSTEM
ALUMINUM ALLOY LINE: The single structure supports the lightweight tension membrane of the outer skin.
STEEL FRAME: Supporting structure of inner glass curtain wall.
CONCRETE FLOOR PLATE: Supporting structure of inner glass curtain wall.

ENVIRONMENTALLY FRIENDLY MEASURES

RAINWATER COLLECTION SYSTEM
Rainwater collection module → Rainwater purification tank → Rainwater purification tank → Rainwater collection module → Rainwater purification tank.

CENTRAL AIR SYSTEM
Exhaust pipe, Circulating tank, Control panel, Power fan.

AIR PURIFICATION SYSTEM
Electrostatic precipitator, Spray filter, Integrated circuit.

TENSILE MEMBRANE
PTFE glass fiber fabric film skin, embedded anti-scratch gel film, and micro-molecular material, PTFE glass fiber sound insulation or moisture resistance.

STEEL FRAME
Outer skin, supplementary support structure.

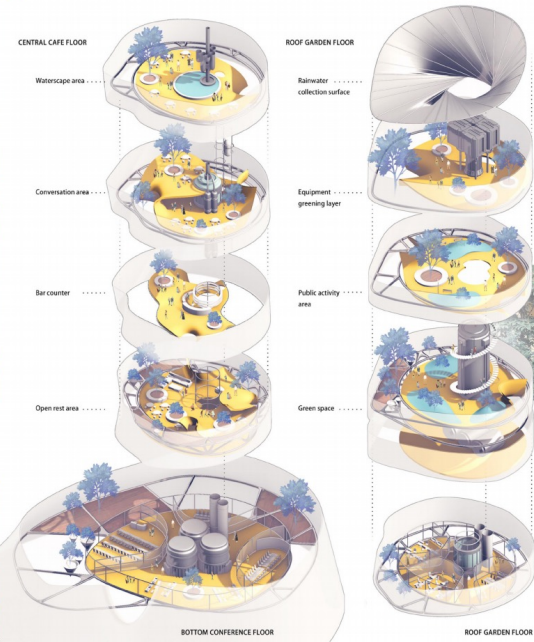
DECORATIVE ROD
Add elevation lines to spread joints, that they cannot pass from here.

- RAIN GARDEN
- EQUIPMENT FLOOR
- HOTEL SUITES
- CAFE
- HOTEL STANDARD ROOM
- LIBRARY
- EQUIPMENT FLOOR
- CO WORKING SPACES
- VERTICAL GARDEN
- CONFERENCE CENTER
- BUSINESS ZONE

作品集整体逻辑：故事性

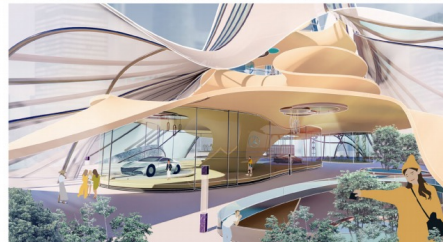
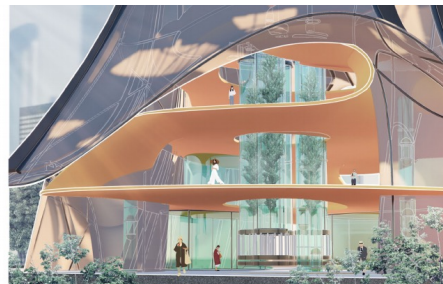
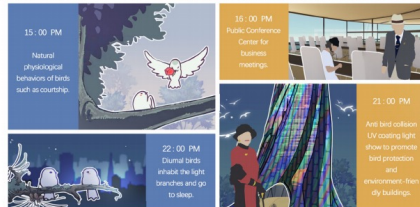
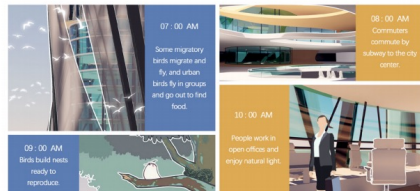


FUNCTIONAL FLOOR AXONOMETRIC



DAILY ACTIVITIES

In the daytime, human beings and birds will live together in an environment-friendly skyscraper, and their lives will intersect but not interfere with each other. At night, most of the lights inside the building will be turned off, and the ultraviolet part outside will start to shine. In addition to birds, it will also be a habitat for urban insects and some stray animals. As the publicity of urban environmental protection, the air and rainwater treatment devices will be exposed in the building.



作品集集中的项目逻辑要完整，
将每一个项目当作一个故事来讲，
讲清故事的起因、经过、结果。

图面表达

信息表达的清晰性, 信息表达的有效性, 信息表达的准确性, 图面表达的美观性

图面表达: 场地调研

SOCIAL BACKGROUND

In Spain, there are many Gypsies gathering areas. These areas are generally located on the edge of urban and rural areas. Therefore, there are a lot of crimes and diseases in these areas. Many people make a living by stealing and begging.

SEVILLE

Seville is the capital and largest city of the Spanish autonomous community of Andalusia. It is situated on the lower reaches of the River Guadalquivir. At the same time, it is also the birthplace of flamenco.

TRIANA

Triana is a neighborhood in Seville, across the Guadalquivir River from the city center. Traditionally, Triana gathered a large number of Roma people, usually living in old silted houses. But it is no longer accurate. For example Bets Street has some of the most expensive real estate in the province. On the whole, most of this neighborhood is quite affluent.

Museo Del Castillo De San Jorge
In the past, Seville built a city wall along the Guadalquivir River. As time flows, People have buried the past city wall and built new buildings on the ground.



Theater

Underground

Centro Cerámica Triana

Since Seville is a city built by the river, many people were engaged in the pottery industry in the past. With the development of science and technology, the pottery kilns were eliminated, people kept his ruins and built a museum on the top of it.

Flamenco



Bars

Bar and Cafe

Bars and cafes are important social places for Seville people. People can not only meet with friends, but also enjoy impromptu flamenco dancing, so these places are widely distributed in Seville.



Semana Santa

Semana Santa is one of the most important religious events in Spain. In Seville, more than fifty religious groups will organize parades during Semana Santa.



Parade

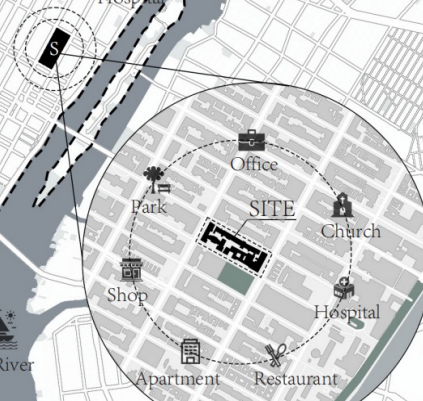
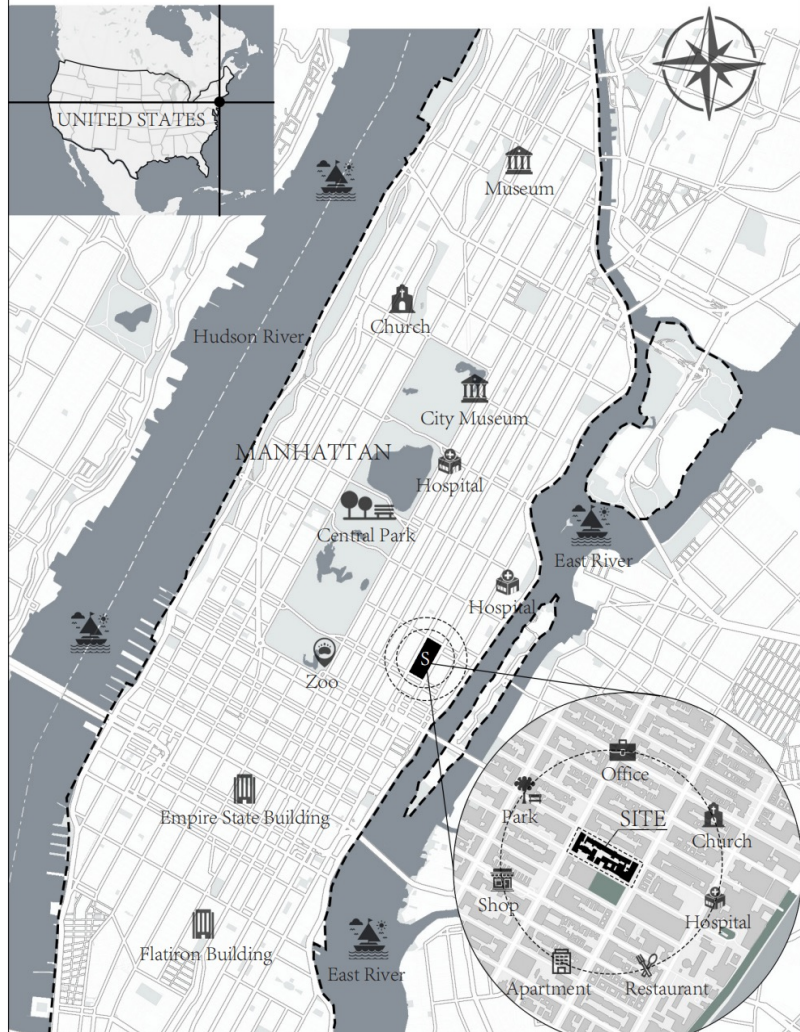


Feria de Abr

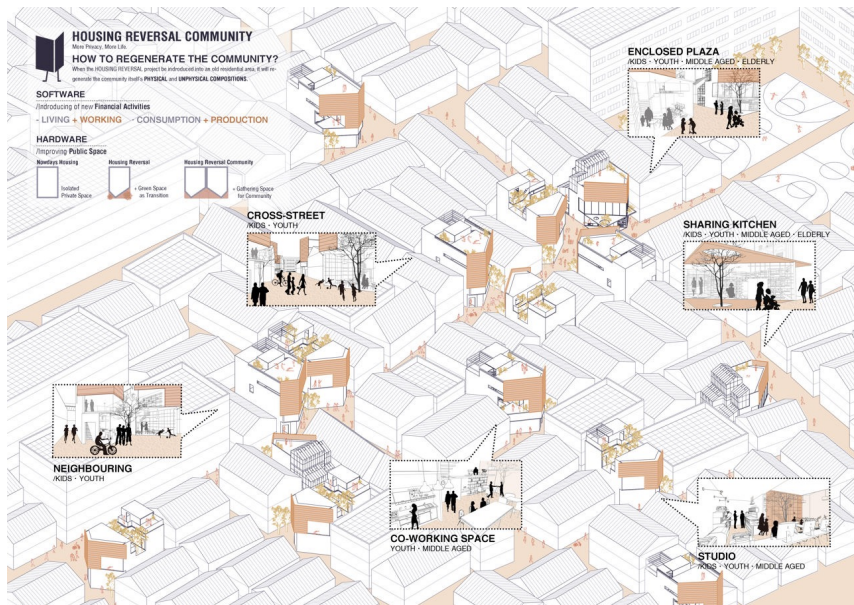
Feria is the most prestigious festival in Seville. During this period, countless casetas spring up in the streets and alleys. People will gather here to share their fun experiences.



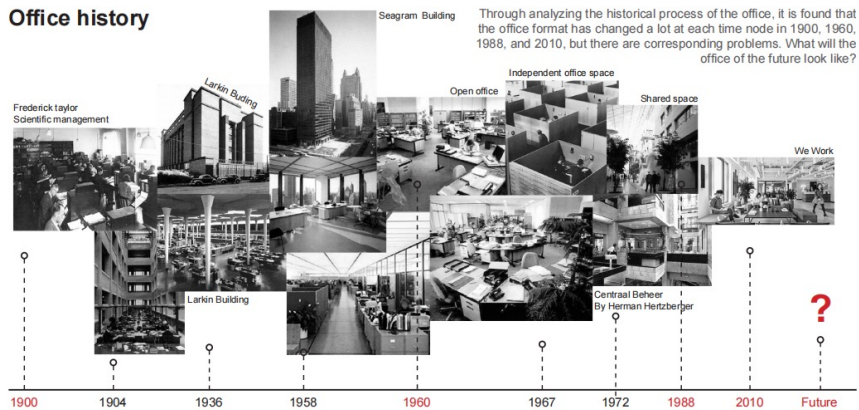
GENERAL MAPPING OF MANHATTAN



图面表达: 场地调研

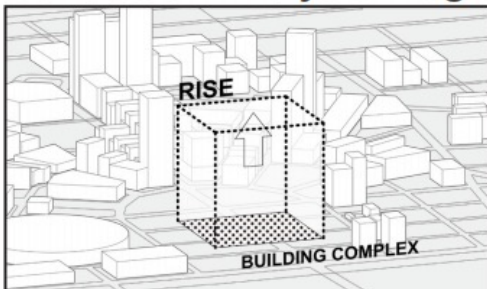


Office history

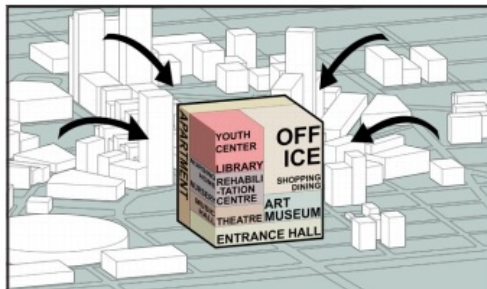


图面表达:
方案生成

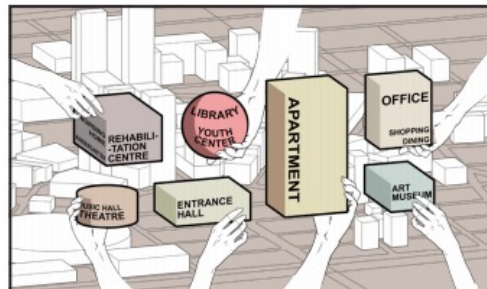
Generation Analysis Diagram



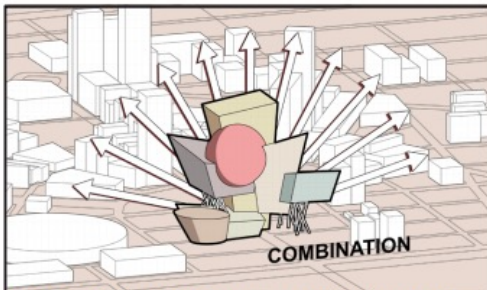
First a huge block rises from the site.



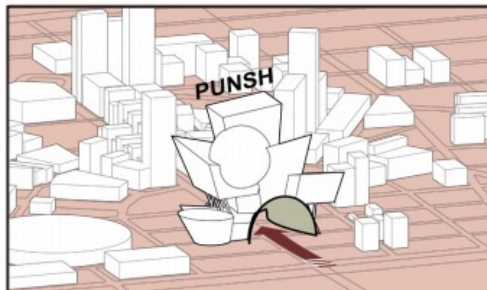
Identify the function of the complex through the surrounding environment.



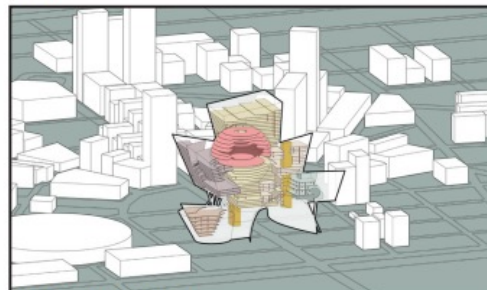
Divide each function into blocks of corresponding size and shape.



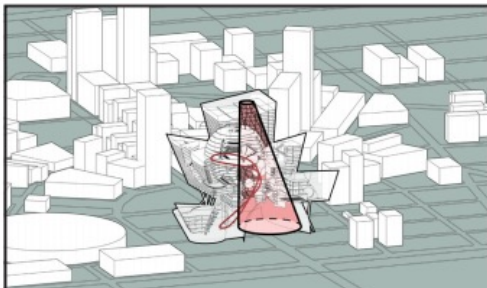
Combine functional blocks and stretch them in a open fashion.



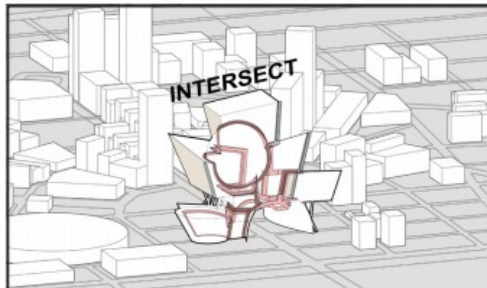
To push for the city's main roads through the building



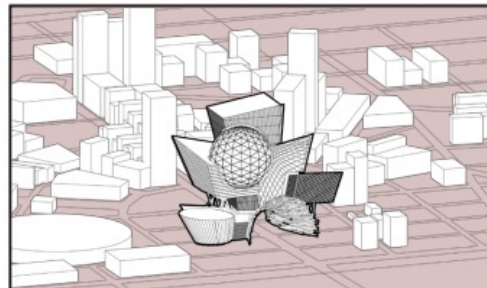
Add floor slab and traffic.



Subtract the dome shape as the atrium, and add a cable car to view the entire building.



Grooves were made at the intersection of the building's skin volume, and part of the outer wall was made false extension.

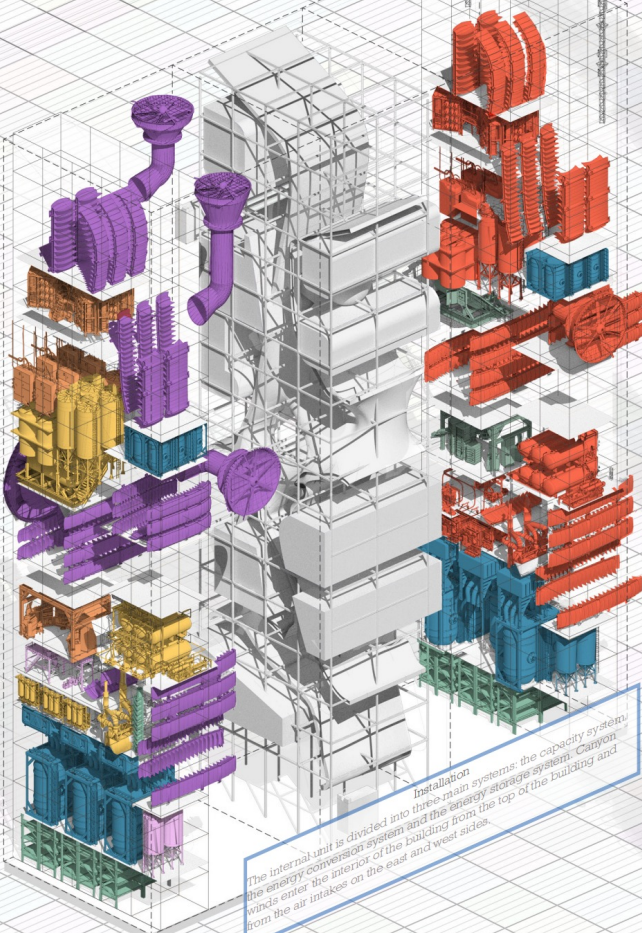


Finally, a different glass curtain wall is designed for each block.

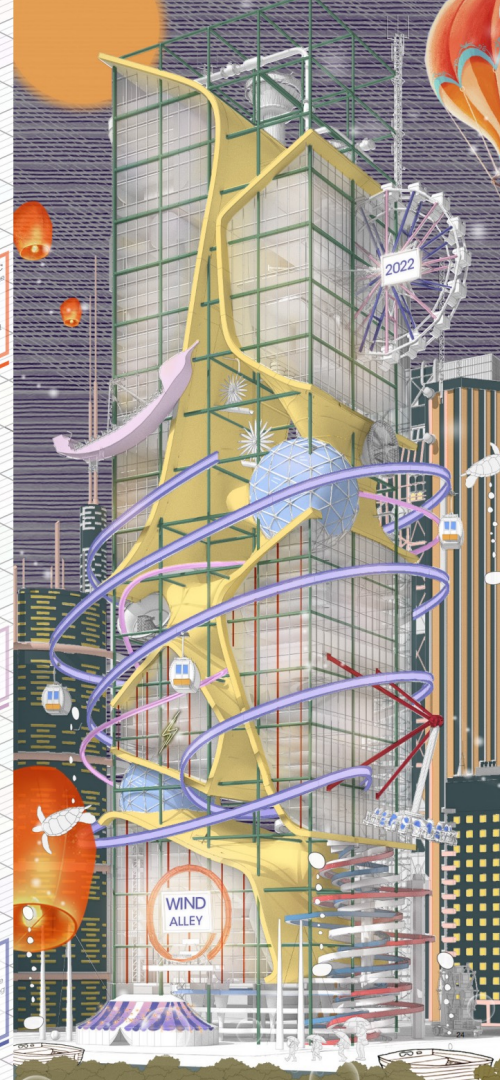
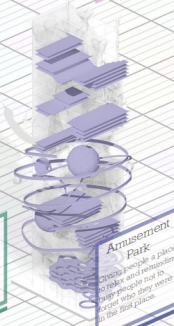
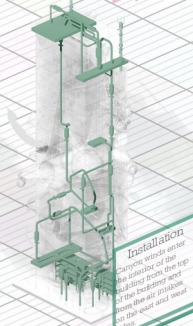
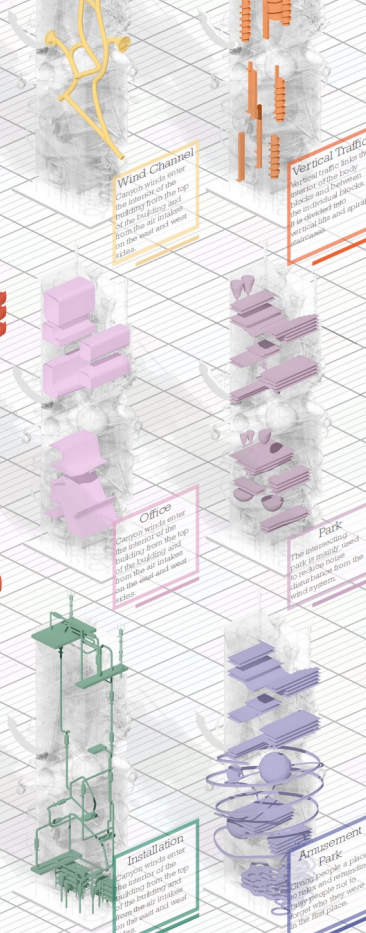
图面表达: 方案表达

- Energy Generation System**
- Wind inlet
 - Control room
 - Energy storage
 - Voltage control room
 - Energy conversion
 - Energy storage

Parallel Systems

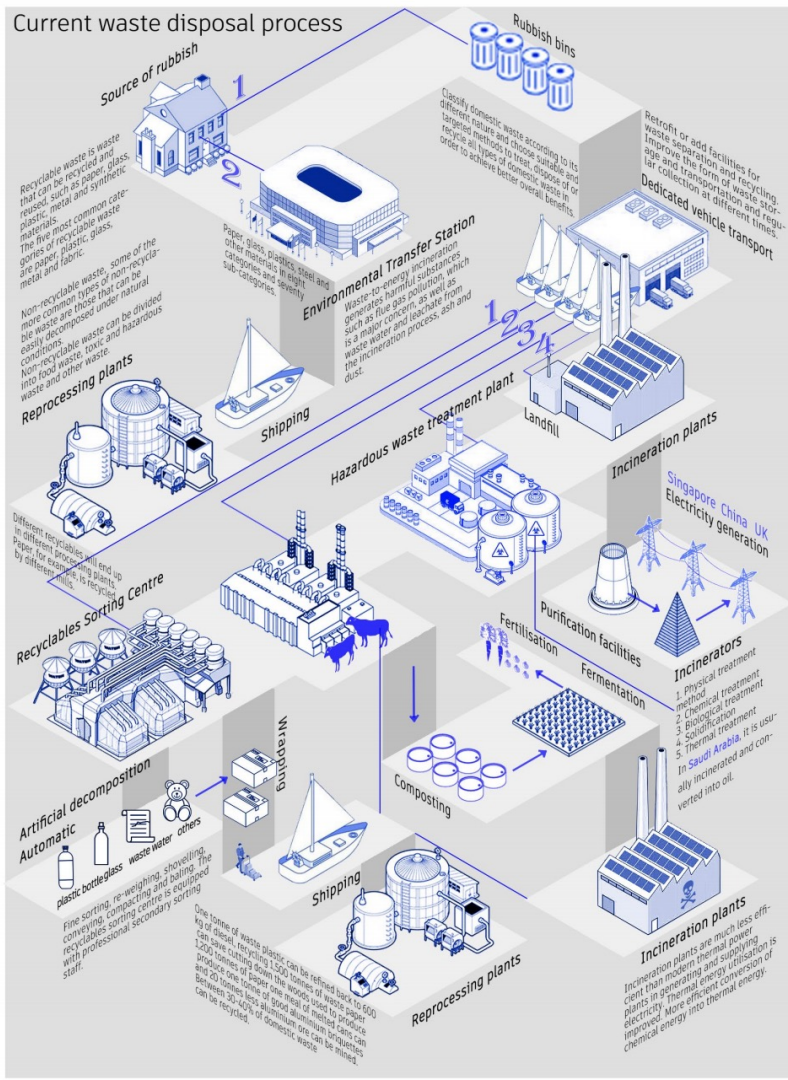


Installation
The internal unit is divided into three main systems: the capacity system, the energy conversion system and the energy storage system. Canyon winds enter the interior of the building from the top of the building and from the air intakes on the east and west sides.

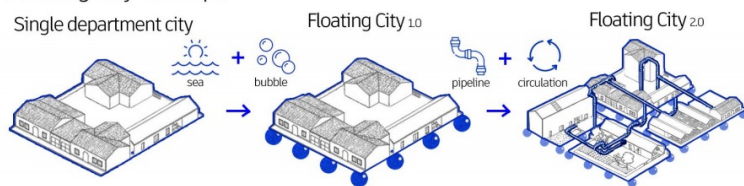


图面表达: 方案表达

Current waste disposal process

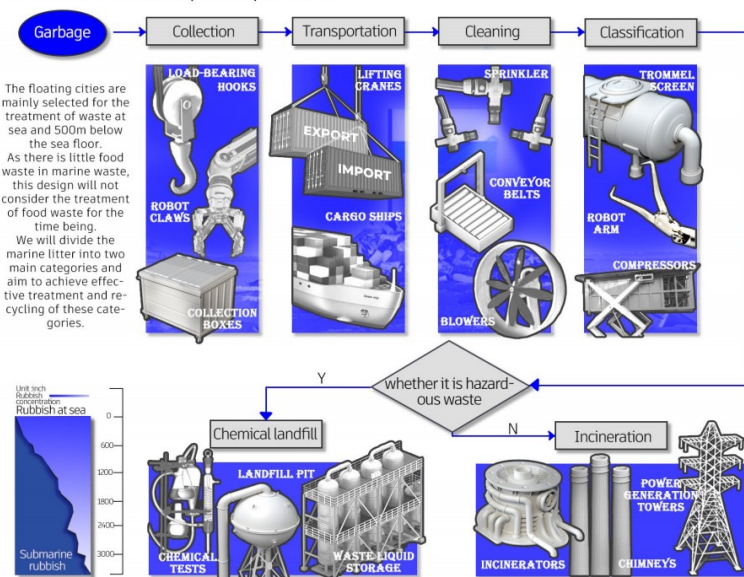


Floating city concept



The city itself is moved to the sea to become a floating city, which grows organically, changes and adapts to the different plates. At the same time, the plates are connected by pipelines to form a self-circulating organic city.

Marine waste disposal process



Evolution of urban clusters



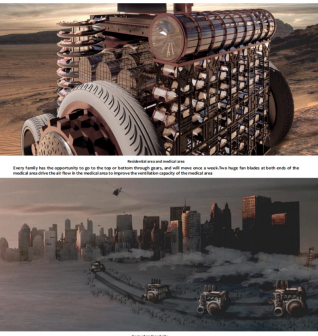
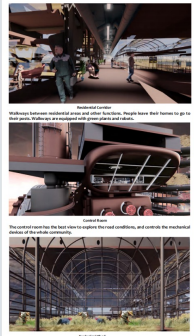
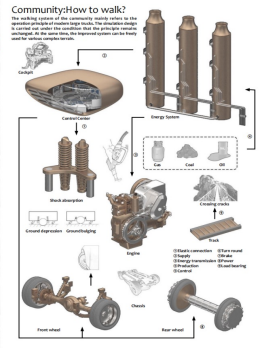
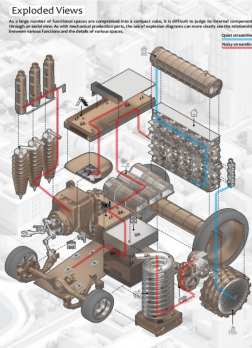
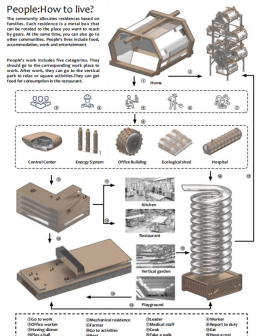
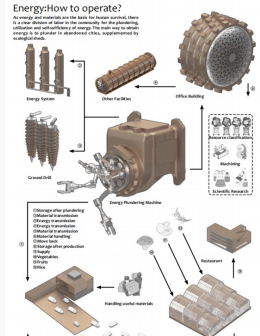
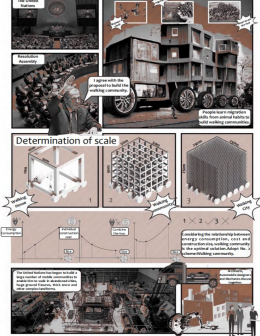
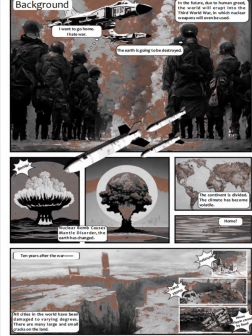
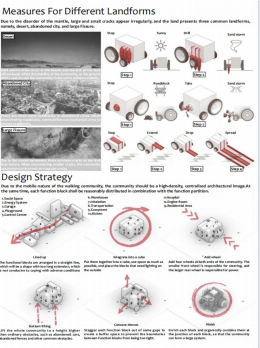
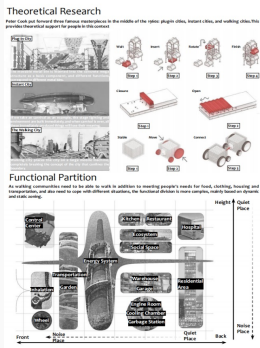
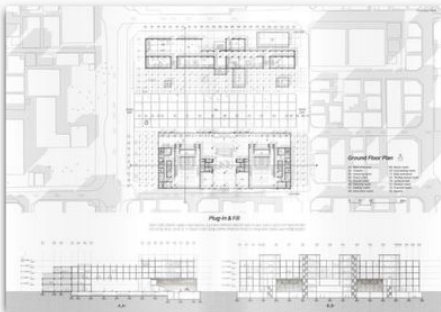
信息表达的清晰性

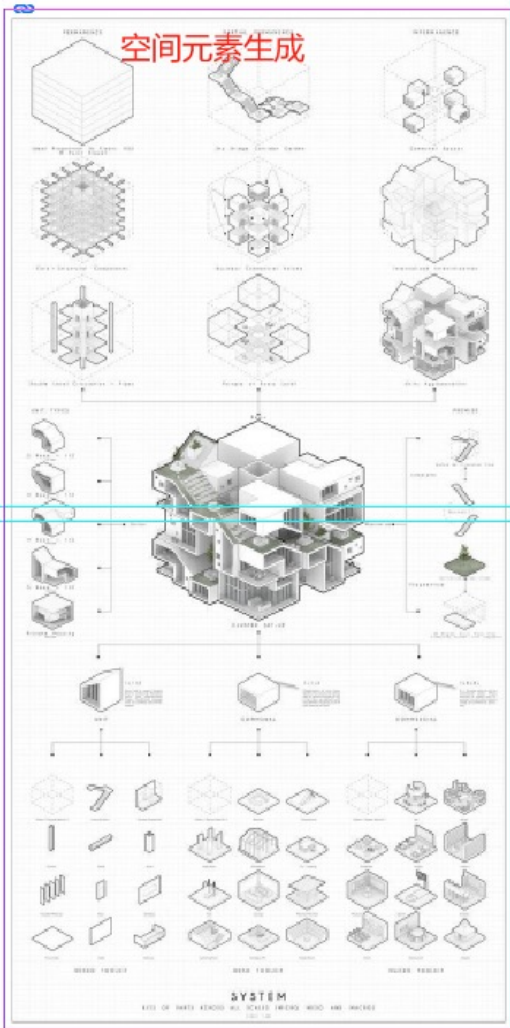
信息表达的有效性

信息表达的准确性

图面表达的美观性

排版



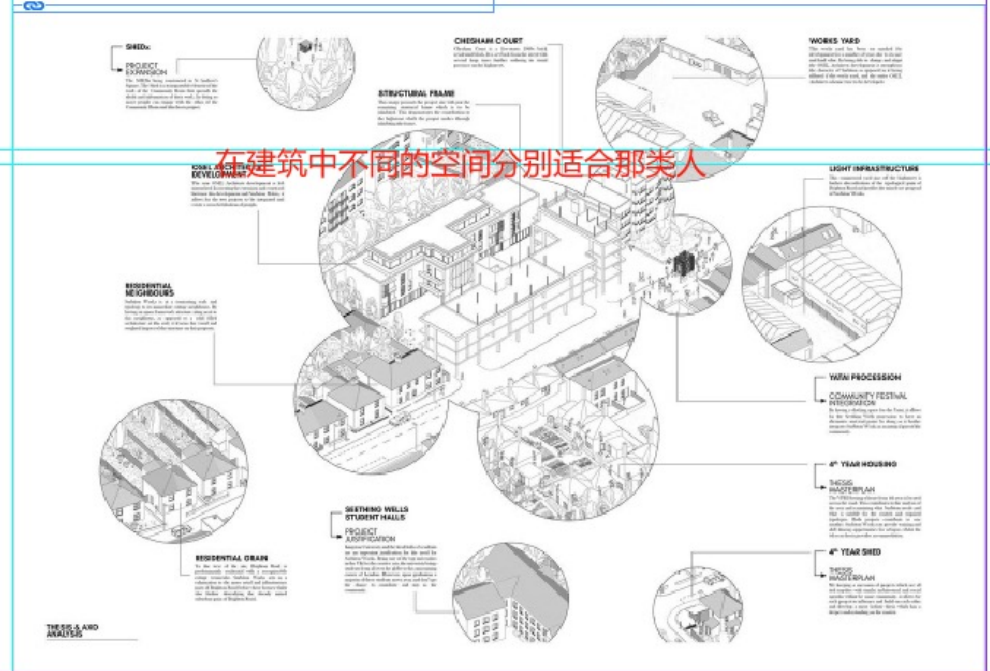


On this single rostrum, a man and a woman, their voices resonating with pure, melodious beauty, perform a classic Huangmei Opera work, Tian Xian Pei, which translates as A Goddess' Marriage. The work depicts a folk tale centered on the love story between a goddess and a man, while its lyrics portray a typical scene in daily life.

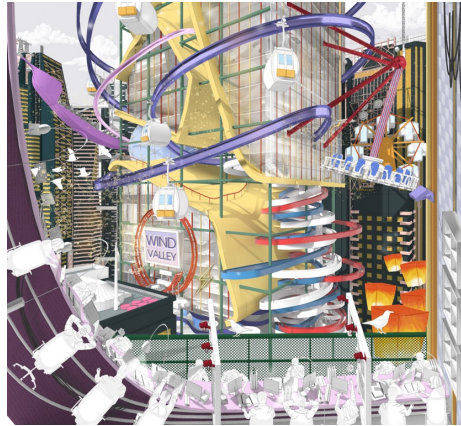
文字说明



在建筑中不同的空间分别适合那类人



城市的风环境容易形成风谷，对行人和道路交通产生影响；该项目旨在**收集、转化和利用**来自办公大楼峡谷的风能。



WIND VALLEY

Use of Wind Energy in Building
Building
[2021.2]
Advisor: Duan Zhengsheng
(Individual Work)

DESIGN NOTE

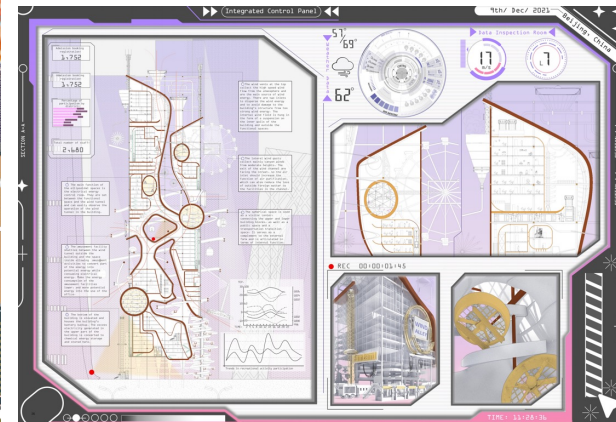
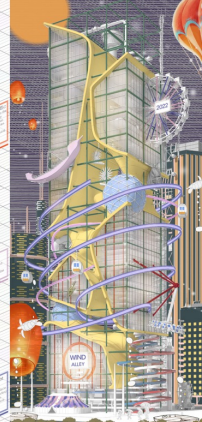
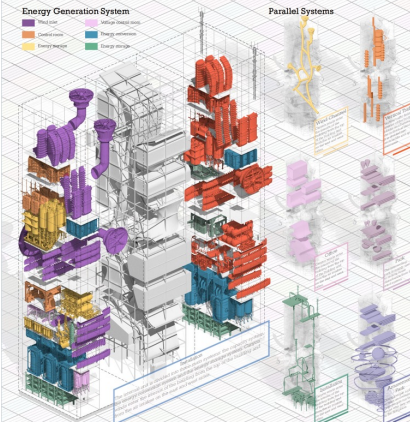
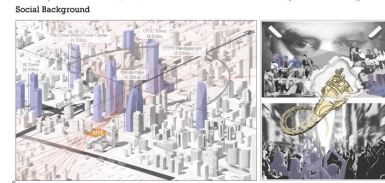
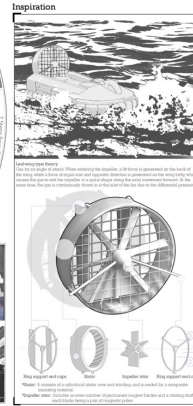
The increasing density of high-rise buildings reflects a number of phenomena. On the one hand, the wind environment in the city is prone to the formation of wind canyons, which has an impact on pedestrians and road traffic; on the other hand, it reflects the current working environment, where people are under increasing pressure and the pace of life is getting faster and faster, and their mental thoughts have long been left behind.

The project aims to collect, transform and utilize wind energy from the canyon in an office building. The site was chosen in Beijing's East Third Ring Road in the Chinese business district, which is the city's financial center, with high building density and high building densities, and plenty of room for improvement in terms of energy and energy. According to statistics, high-rise buildings in Beijing are generally oriented to receive a breeze, which is the most "powerful" stage for wind reduction. The average wind speed in the urban area increases with height and distance from the street. This case presented the increase in value. Between 10 and 30 meters, the wind speed increases in a value-added of 100 to 300 meters above ground level, and that of the most "powerful" angle of wind intensification for high-rise buildings in Beijing.

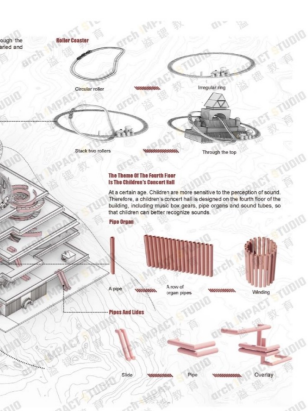
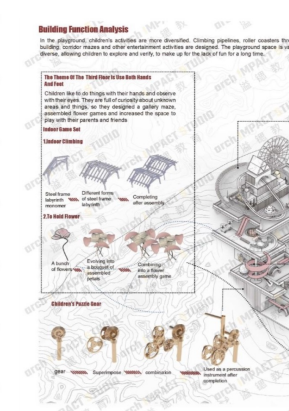
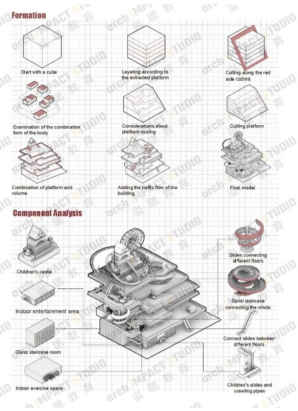
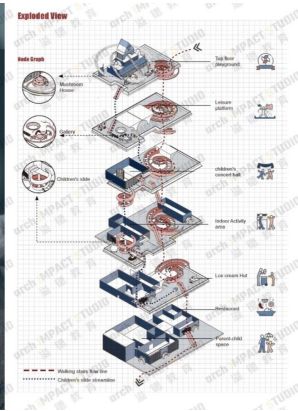
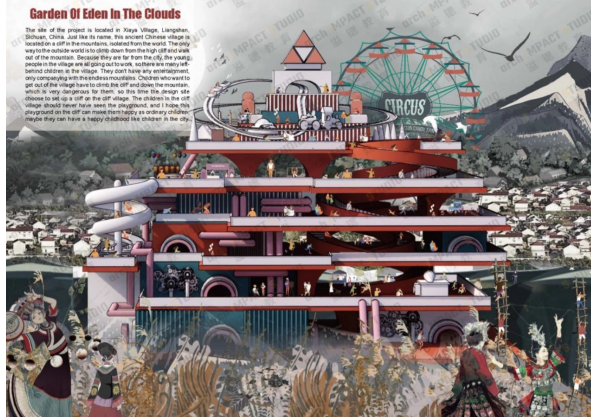
Some of the wind energy will be used to create a vertical playground, a counterweight to the high density of the surrounding office buildings and a recreational tool to target the original intention.

It is an environmentally friendly architectural creation and a member of the company of the building.

IV



为山区里的孩子们提一片游乐的场所



传统文化类：舞狮体验馆

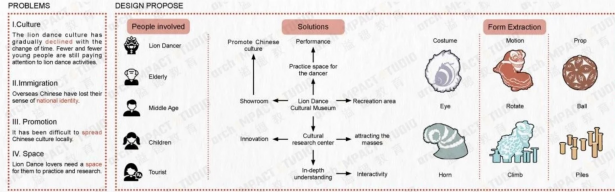
海外中国文化的推广，让海外华人认可了解中国文化，了解舞狮所包含的文化内涵，空间处理强调体验感，通过从舞狮服装、动作和道具中提取的元素放置盒子中，并通过体积切割形成空间。



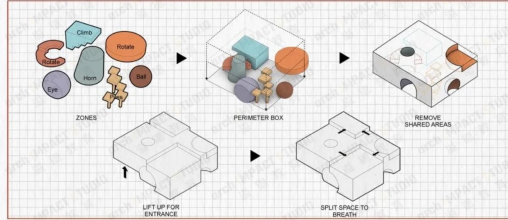
01 AWAKENING PAVILION
YUAN HANG
INDIVIDUAL WORK
2022

BRIEF

The number of Chinese people who once immigrated to the United States has diminished over time, and the new generations are becoming less readily minded. As a result, many traditional Chinese customs, such as lion dance, have faded away, and the Awakening Pavilion, inspired by the lion culture, aims to awaken Chinese people's sense of race and give locals a chance to learn more about Chinese culture.



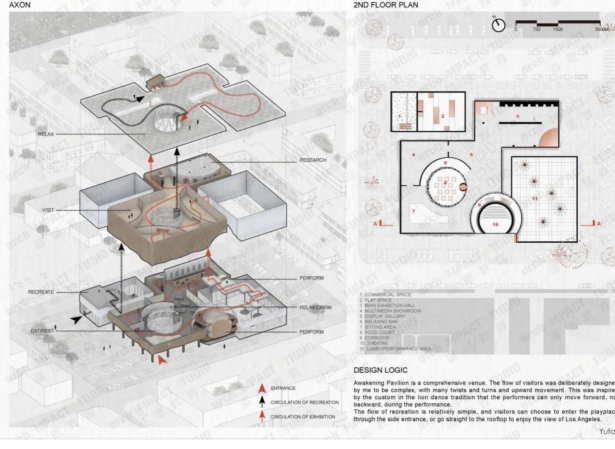
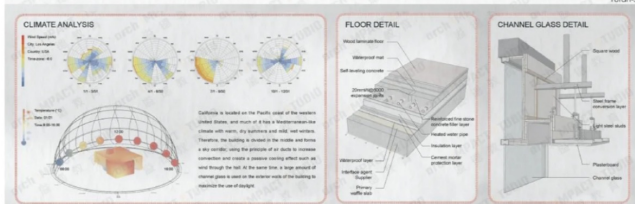
PROGRESS



CONCEPT

Faced to the existing problems of the site, I thought a multi-functional integrated space will be a good solution. The blocks of elements taken from the lion dance costumes, movements and props are placed into boxes representing safety, and spaces are formed by rationally cutting them. The large spaces are used for play and performance, while the smaller spaces can be used for research and rest. The regular row shapes formed between the spaces are mainly used for exhibitions.

The large boxes are separated and visitors can access the different spaces through transparent glass bridges. The relationship between the spaces is continuously changing so that visitors can have different feelings in the box.



叙事性表达, 电影转译。

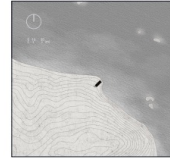


This has been the best kind of 1900 since the movie design. The production and 1900 is the best kind of 1900. The production and 1900 is the best kind of 1900. The production and 1900 is the best kind of 1900.

Dear 1900

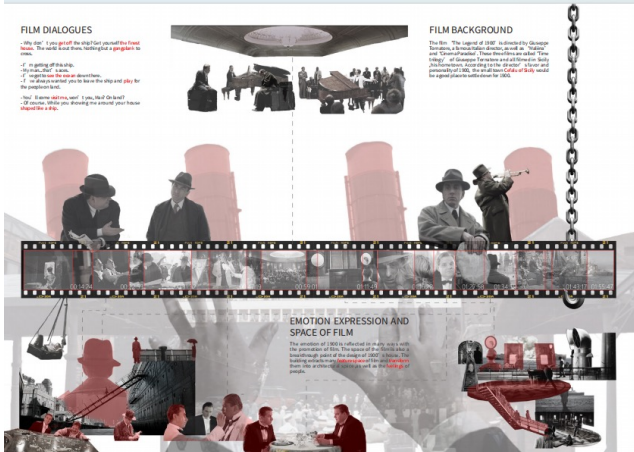
How are you doing after you get off the ship? I hope you all the best. How you and the girl? I hope you all the best. How you and the girl? I hope you all the best. How you and the girl? I hope you all the best.

I hope you all the best. How you and the girl? I hope you all the best. How you and the girl? I hope you all the best. How you and the girl? I hope you all the best. How you and the girl? I hope you all the best.



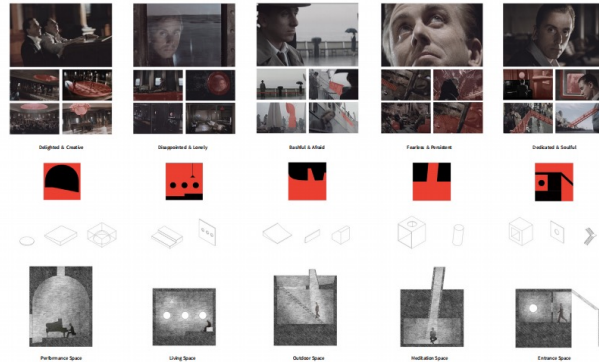
SITE PLAN

The building is a gift from the sea. It is a gift from the sea. It is a gift from the sea. It is a gift from the sea. It is a gift from the sea. It is a gift from the sea.

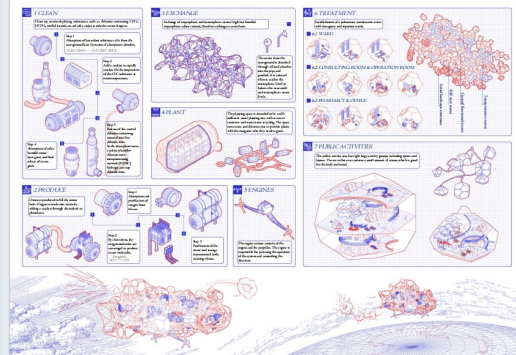
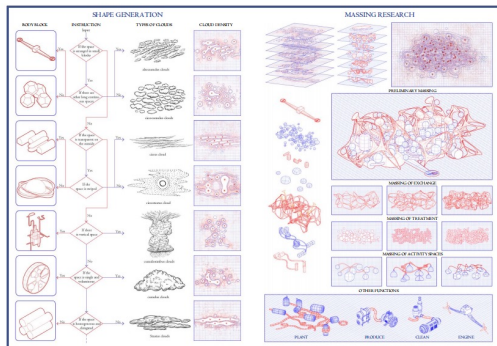
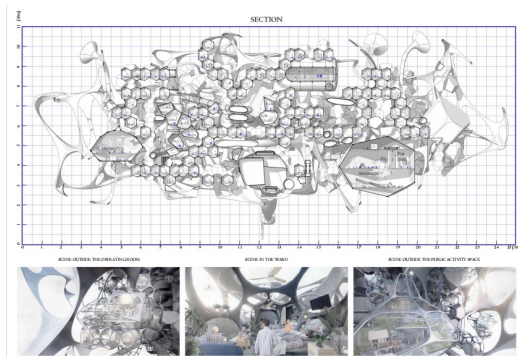
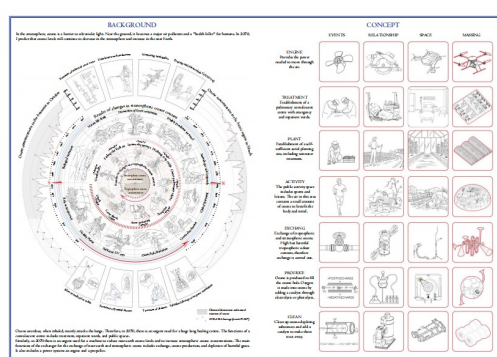


SPATIAL TRANSFORMATION

The design approach for spatial transformation of 1900 is the film, and use the spatial characteristics of the film to transform the spatial characteristics of the film. The design approach for spatial transformation of 1900 is the film, and use the spatial characteristics of the film to transform the spatial characteristics of the film.

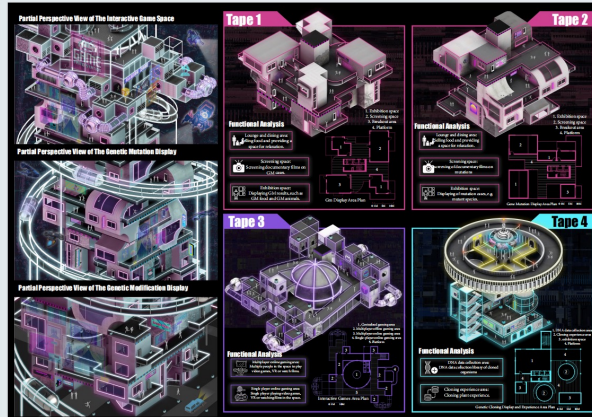
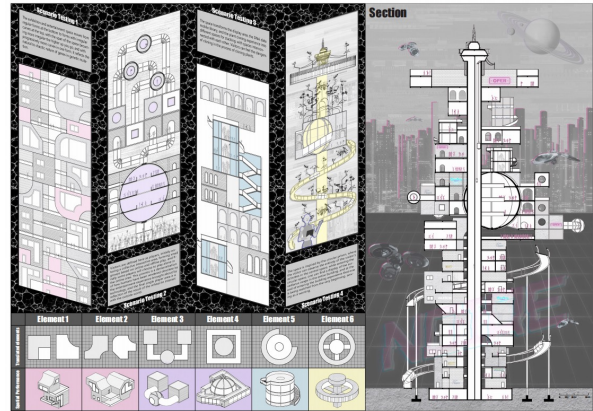
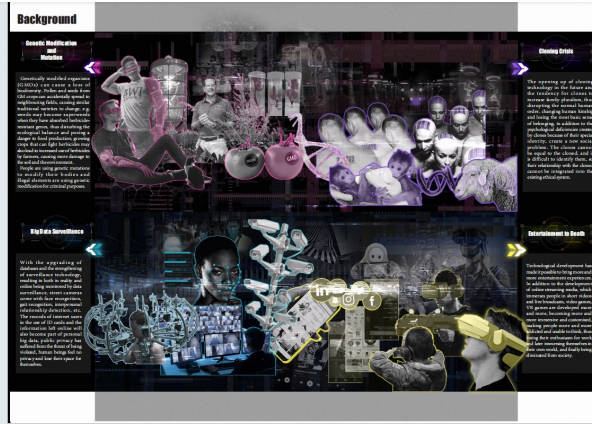
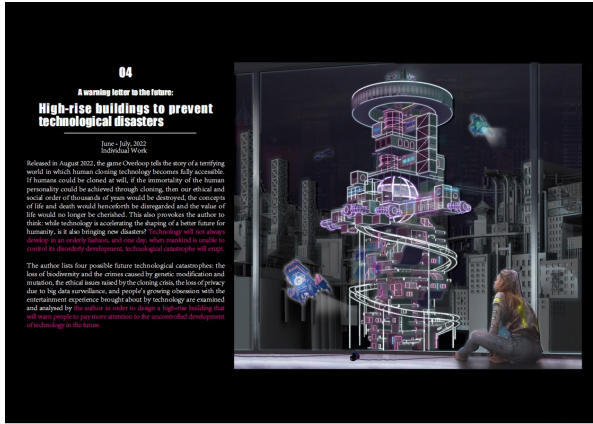


绿色环保主题，建筑装置，
臭氧净化器。近地层吸收多余的臭氧，移动到平流层之前释放臭氧，以补偿平流层臭氧的消耗。结合康复中心，
可以进行治疗和休养，包括各种公共活动空间。



批判类：娱乐至死

技术发展的双刃剑，未来技术发展带来的灾难：生物多样性的丧失，基因改造和突变造成的犯罪，克隆危机引发的伦理问题，大数据监控造成的隐私损失，人们沉迷于高科技，警示人们关注高科技的失控发展



最终的设计方案要呈现

综合展示设计能力

完整清晰通顺的设计逻辑

具有亮点的设计概念

合适的表达方法

核弹博物馆

核武器的致命危害，呼吁人类和平

PROJECT 4 - THE LAST NUCLEAR BOMB MEMORIAL

A way to remember the history
Global commercial architecture
Competition: Gae Bolander
(Individual work)
2020 Fall

On the recent anniversary of the bombing, Nagasaki Mayor Tomihisa Tamai called on Japanese President Shinzo Abe and the central government to sign and ratify the 2017 United Nations Treaty on the Prohibition of Nuclear Weapons. We support the call for a ban on nuclear weapons and are asking the international architecture community to create designs for "The Last Nuclear Bomb Memorial".

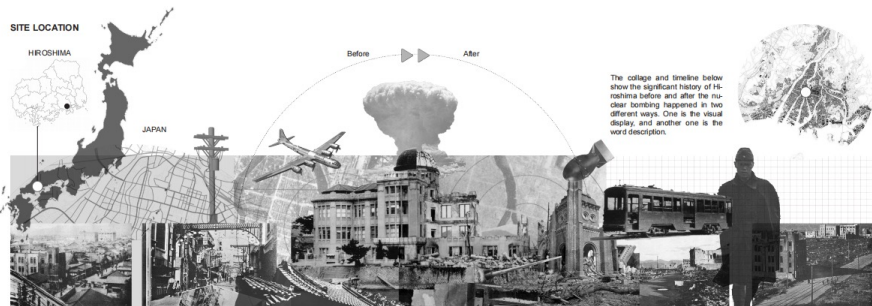
For this architecture competition, participants are tasked with creating a memorial in a decommissioned nuclear weapon testing site in response to the global silence surrounding the issue of nuclear weapons. The architecture ideas must be communicated clearly with visuals. We are asking participants to design a building or structure in which the architecture would do all the talking.



SITE LOCATION

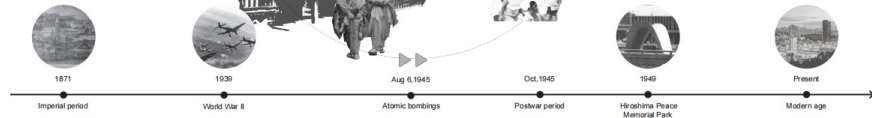
HIROSHIMA

JAPAN



The collage and timeline below show the significant history of Hiroshima before and after the nuclear bombing happened in two different ways. One is the visual display, and another one is the word description.

TIMELINE



As Japan's main economy shifted from rural to urban industries, Hiroshima became a major urban center during the imperial period.

During World War II, the Army Marine Corps headquarters was located in the port of Ujima. Hiroshima also has a large military supply chain and is an important shipping center.

At 8:15 am (Hiroshima time) on Monday 6 August 1945, the nuclear weapon "Little Boy" was dropped on Hiroshima, directly killing at least 70,000 people. Less than 10% of the casualties were soldiers. Before the bombing, Hiroshima had a population of about 345,000.

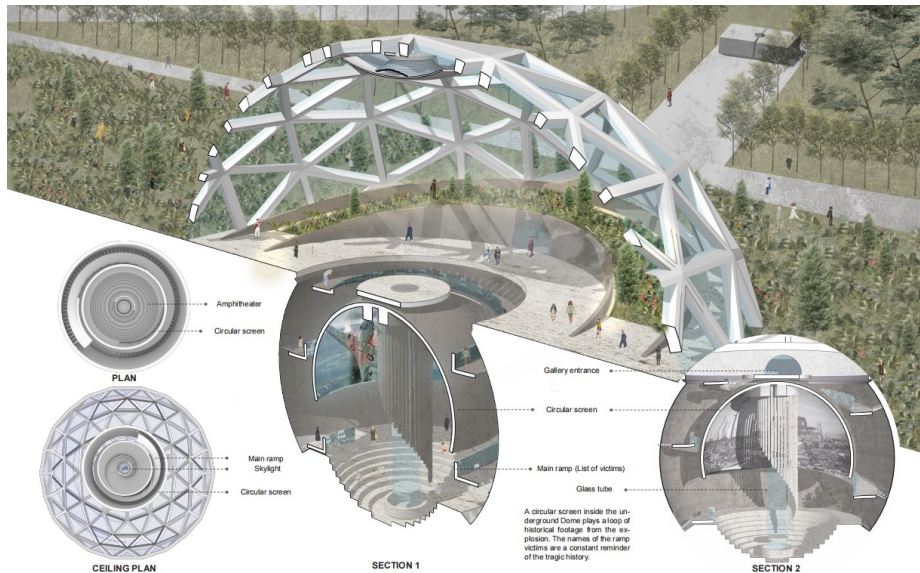
By the end of 1945, injuries and radiation had brought the total number of deaths between 90,000 and 195,000. About 70% of the city's buildings were destroyed, and another 7 percent were severely damaged.

In 1949, the design of the Hiroshima Peace Memorial Park was decided. The park was built in the Hiroshima Prefecture Industrial Promotion Agency, the closest surviving building to the bombing site.

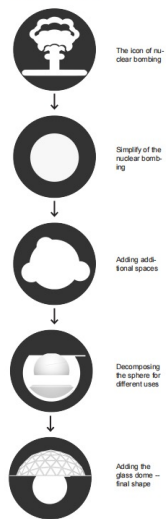
As of June 1, 2019, the estimated population of Hiroshima City was 1,199,391. As of 2019, the gross domestic product (GDP) of Hiroshima, a large city in Hiroshima, was US\$61.3 billion.

核弹博物馆

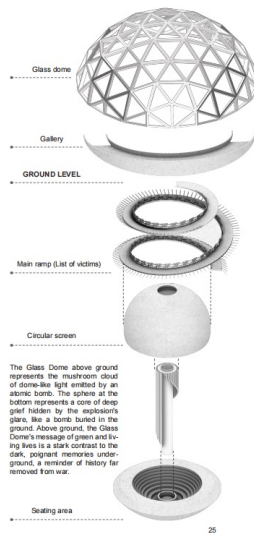
地上平静祥和，地下肃穆庄严，展示悲怆的人类战争，引发人们的思考战争的残酷，建筑原型是爆炸产生的蘑菇云



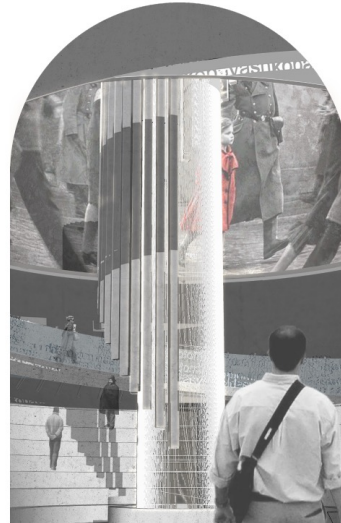
FORM GENERATION



EXPLODED AXON



INTERIOR RENDERING





01 WANDERING ARTISTS PERFORMANCE CENTER

Individual Work
 Site Location: China-GuangXi-Guilin Production time: 2019.11

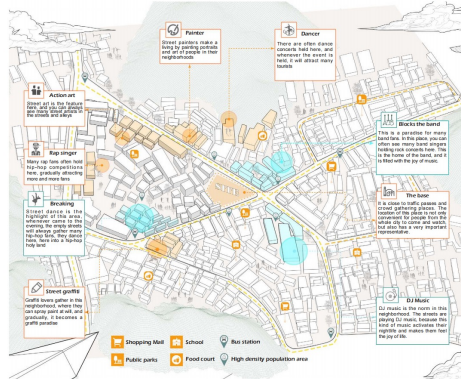
There are such a group of wandering street artists in Guilin. All of them have unique skills and perform wonderful performances for people in the streets. Some people express their love for street art, and some people make a living from it. But they are often driven away by law enforcement and city managers, cause them not to receive the respect they deserve. By designing a highly inclusive and interactive performance center, it can not only meet their performance needs and promote street art culture, but also allow more people to know them and make street artists truly respected

Project Introduction

Guilin, Guangxi has always been the fastest and most representative city for Chinese art development, while Yangshuo is the most representative art town in Guilin. There are many street artists on the streets of Yangshuo, Guilin. Every corner when night falls, they start their performance and give their street their own artistic atmosphere. Many tourists come here to experience their street atmosphere, but with the reform of the city, they can't perform in the streets at all. Without their rejection, the streets will become cold, and the lively and artistic atmosphere of the past will be lost, and this art town will become cold, so in order not to let this art town losing its core spiritual center, street artists desperately need a performance venue for them to perform to their talent and push street culture to a climax in this art town.



Site Analysis



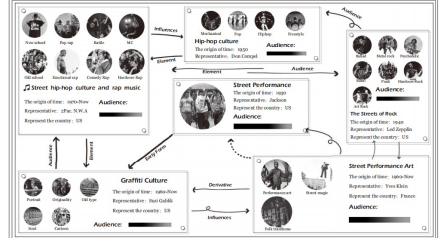
Status of Performers



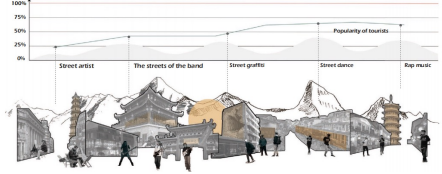
The History of Street Culture

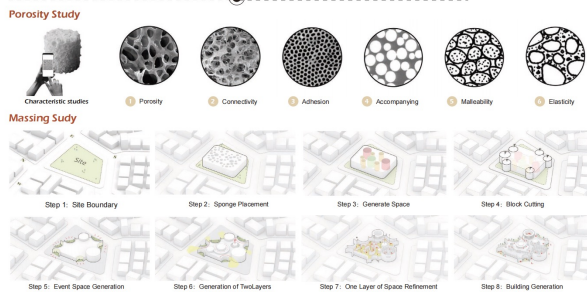
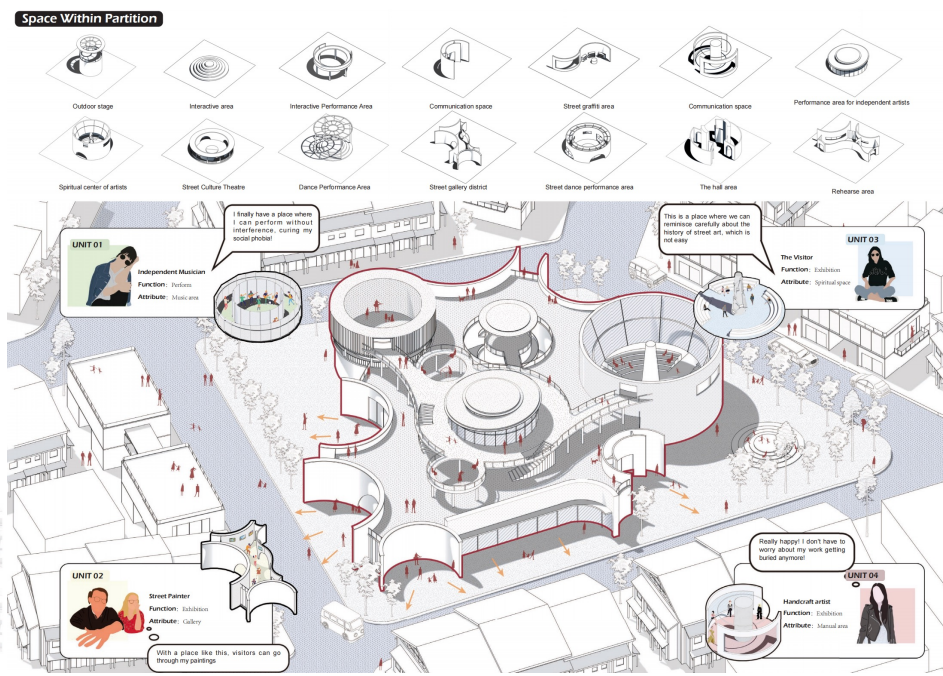
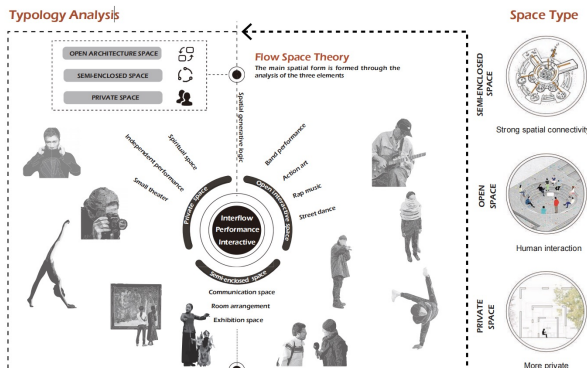
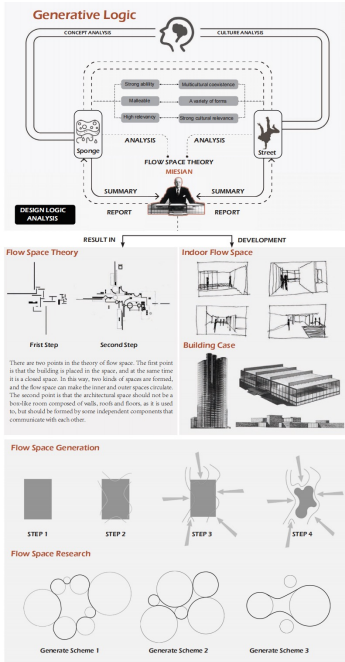


The Composition of Street Culture



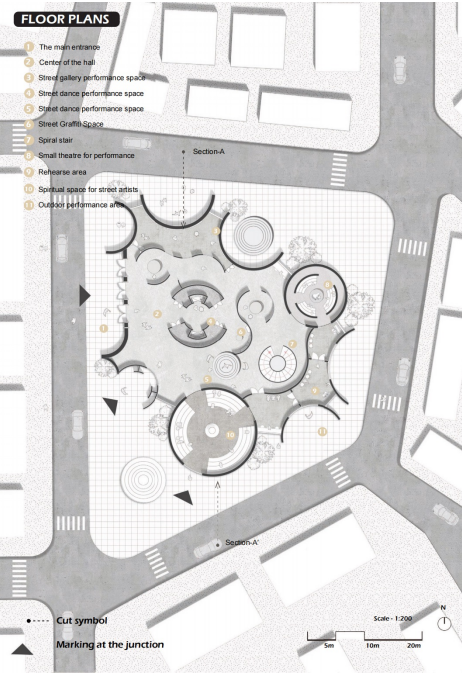
History of Site





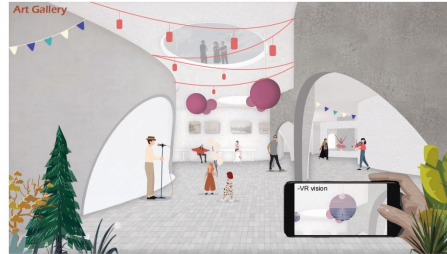
FLOOR PLANS

- 1 The main entrance
- 2 Center of the hall
- 3 Street gallery performance space
- 4 Street dance performance space
- 5 Street dance performance space
- 6 Street dance performance space
- 7 Street Graffiti Space
- 8 Spiral stair
- 9 Small theatre for performance
- 10 Rehearse area
- 11 Spiritual space for street artists
- 12 Outdoor performance area



FIRST FLOOR

The interior space on the first floor pays more attention to the interactivity of the space. It not only displays various performance spaces separately, but also no longer stipulates a single space attribute. More importantly, it gives some boxing equipment technologies to them. VR technology enhances the sense of interaction, increases the ease of use, and allows visitors to deeply feel all aspects of street artists.



SECOND FLOOR

The platform on the second floor not only provides sufficient performance space and interactive places for performers, but also makes the route planning of the viewers no longer single, so that the viewers are no longer bound to watch one performance by one. Standing on the second floor platform, the viewers can also see the live performance of any performance, whether it is inside the building or the street outside the building, you can see the performers perform.



SECTION VIEW-A-A'

